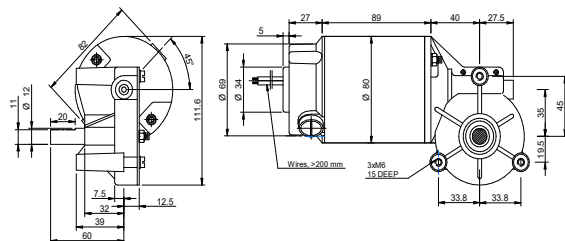


DRAWING (mm)



PHOTO



MODEL NO. DESIGNATION

WRD8089 - VOLTAGE - GEAR RATIO

Example: WRD8089-24-50

ACCESSORIES



● C = customizations are offered on demand even for smaller quantities. Typical customizations are indicated with a green dot at column end. Please contact us for any customization request.

GEAR MOTOR DATA

Gear ratio		50:1
Nominal speed	rpm	70
Nominal torque	Nm	11
Peak torque	Nm	18
Nominal power	W	81
Gearbox efficiency	%	65
Weight	kg	2.8

OTHER GEAR MOTOR DATA

Service life	h	3000	C
Performance tolerances	%	± 15	
Operating temperature	°C	-10 to 60	
IP rating ¹		IP40	
Manufacturing standard		ISO 9001	
CE label UL label		No No	

BRUSHED DC MOTOR DATA

Nominal voltage	V	24	C
Nominal current	A	3.1	
Nominal speed	rpm	3500	
Nominal torque	Ncm	34	
Nominal power	W	130	
No load current	A	1.5	
No load speed	rpm	3800	
Start/stall current	A	55	
Start/stall torque	Ncm	310	
Motor commutation		Carbon brush	
Motor rotor		Iron	
Motor cable		AWG14	
Motor cable length	mm	200	
Weight	kg	2	

GEARBOX DATA

Gearbox type	Worm gearbox	
Gear angle	Right	
Material gear	Brass and plastic	●
Bearing type	Ball bearing	
Shaft material	Hardened stainless steel	●