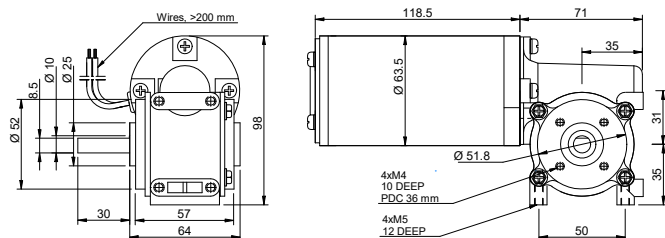


## DRAWING (mm)



## PHOTO



## MODEL NO. DESIGNATION

WRD63118 - VOLTAGE - GEAR RATIO - FEATURE

Example: WRD63118-12-10-ME

ME = Magnetic encoder  
OE = Optical encoder  
B = Brake

## ACCESSORIES



● C = customizations are offered on demand even for smaller quantities. Typical customizations are indicated with a green dot at column end. Please contact us for any customization request.

## GEAR MOTOR DATA

		10:1	15:1	30:1
Gear ratio		10:1	15:1	30:1
Nominal speed	rpm	250	160	81
Nominal torque	Nm	1.1	1.2	1.5
Peak torque	Nm	1.4	2.0	3.4
Nominal power	W	28	20	13
Gearbox efficiency	%	70	50	32
Weight	kg	2.6	2.6	2.6

## OTHER GEAR MOTOR DATA

Service life	h	3000
Performance tolerances	%	± 15
Operating temperature	°C	-10 to 60
IP rating <sup>1</sup>		IP40   IP51
Manufacturing standard		ISO 9001
CE label   UL label		No   No

## BRUSHED DC MOTOR DATA

Nominal voltage	V	12
Nominal current	A	4.3
Nominal speed	rpm	2500
Nominal torque	Ncm	16
Nominal power	W	42
No load current	A	1.2
No load speed	rpm	3000
Start/stall current	A	26
Start/stall torque	Ncm	110
Motor commutation		Carbon brush
Motor rotor		Iron
Motor cable		AWG14
Motor cable length	mm	200
Weight	kg	1.3

## NOTES

1. IP51 without encoder, IP40 with encoder.

## GEARBOX DATA

Gearbox type		Worm gearbox
Gear angle		Left
Material gear		Brass ●
Bearing type		Sleeve bearing
Shaft material		Hardened stainless steel ●

## BRAKE DATA

		Brake activation unenergized
Type		
Voltage	V	12   24
Power	W	10
Static friction torque	Nm	2.0
Cable length	mm	70
Diameter	mm	57
Length	mm	32
Weight	kg	0.45

## ENCODER OPTIONS

		MAGNETIC	OPTICAL
Pulses per revolution		18x2	1000
Channels		2	2
Phase shift	°	90 ± (1/8)T	90
Encoder rear cover material		Plastic	-
Size	mm	Width 47   Length 37   Depth 62.5	-
Harness cable		AWG28	-
Harness length	mm	420	350
Connection		OR Vcc   GRN GND   YLW SIG A   BLU SIG B	RED +5 VDC   RED+WT 0 VDC   BLU A+   BLU+WT A-   BLK B+   BLK+WT B-
Supply voltage	V	Min. 5   Max. 20	Min. 5   Max. 20
Supply current	mA	-	< 80
Output wave		-	Line driver
Open collector output		Requires external output resistors	-
Frequency response	kHz	-	Max. 25
Weight	g	100	100