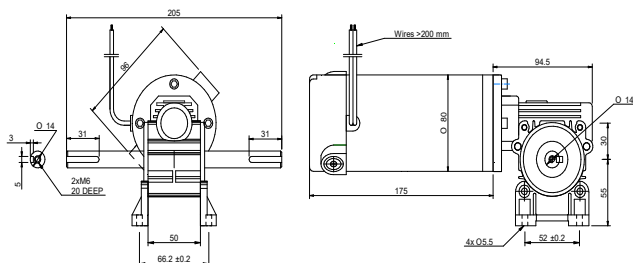


DRAWING (mm)



PHOTO



MODEL NO. DESIGNATION

WHD80175 - VOLTAGE - GEAR RATIO - FEATURE

Example: WHD80175-24-10-ME

ME = Magnetic encoder
OE = Optical encoder
B = Brake

ACCESSORIES



● C = customizations are offered on demand even for smaller quantities. Typical customizations are indicated with a green dot at column end. Please contact us for any customization request.

GEAR MOTOR DATA

		10:1	15:1	20:1	25:1	30:1	40:1	50:1
Gear ratio		10:1	15:1	20:1	25:1	30:1	40:1	50:1
Nominal speed	rpm	320	210	160	130	110	80	64
Nominal torque	Nm	4.9	6.7	8.5	10	9.5	12	15
Peak torque	Nm	15	17	19	22	24	24	24
Nominal power	W	160	150	140	140	110	100	97
Gearbox efficiency	%	72	65	62	60	46	44	42
Weight	kg	7.1	7.1	7.1	7.1	7.1	7.1	7.1

OTHER GEAR MOTOR DATA

Service life	h	3000
Performance tolerances	%	± 15
Operating temperature	°C	-10 to 60
IP rating ¹		IP40 IP51
Manufacturing standard		ISO 9001
CE label UL label		No No

BRUSHED DC MOTOR DATA

Nominal voltage	V	24
Nominal current	A	12
Nominal speed	rpm	3200
Nominal torque	Ncm	69
Nominal power	W	230
No load current	A	2.1
No load speed	rpm	3600
Start/stall current	A	58
Start/stall torque	Ncm	380
Motor commutation		Carbon brush
Motor rotor		Iron
Motor cable		AWG14
Motor cable length	mm	200
Weight	kg	5.5

NOTES

1. IP51 without encoder, IP40 with encoder.

GEARBOX DATA

Gearbox type	Worm gearbox
Gear angle	Hollow
Material gear	Brass ●
Bearing type	Ball bearing
Shaft material	Hardened stainless steel ●

BRAKE DATA

Type	Brake activation unenergized	
Voltage	V	12 24
Power	W	10
Static friction torque	Nm	4.5
Cable length	mm	400
Diameter	mm	60.6
Length	mm	34.2
Weight	kg	0.45

ENCODER OPTIONS

	MAGNETIC	OPTICAL
Pulses per revolution	18x2	1000
Channels	2	2
Phase shift	90 ± (1/8)T	90
Encoder rear cover material	Plastic	-
Size	mm	mm
	Width 47 Length 37 Depth 62.5	-
Harness cable	AWG28	-
Harness length	mm	350
Connection	OR Vcc GRN GND YLW SIG A BLU SIG B	RED +5 VDC RED+WT 0 VDC BLU A+ BLU+WT A- BLK B+ BLK+WT B-
Supply voltage	V	Min. 5 Max. 20
Supply current	mA	< 80
Output wave	-	Line driver
Open collector output	Requires external output resistors	-
Frequency response	kHz	Max. 25
Weight	g	100