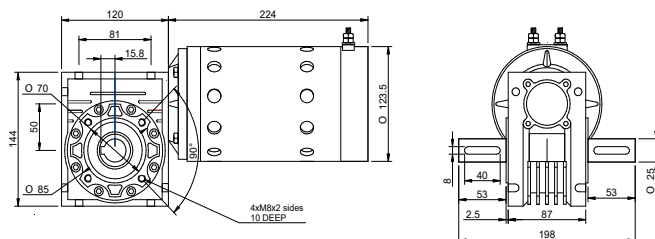
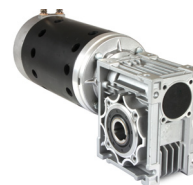


DRAWING (mm)



PHOTO



MODEL NO. DESIGNATION

WHD123224 - VOLTAGE - GEAR RATIO

Example: WHD123224-24-10

ACCESSORIES

● C = customizations are offered on demand even for smaller quantities. Typical customizations are indicated with a green dot at column end. Please contact us for any customization request.

GEAR MOTOR DATA

C

		10:1	15:1	20:1	30:1	40:1
Gear ratio		10:1	15:1	20:1	30:1	40:1
Nominal speed	rpm	200	140	100	67	50
Nominal torque	Nm	13	16	21	31	41
Peak torque	Nm	34	44	49	58	68
Nominal power	W	280	230	220	220	210
Gearbox efficiency	%	66	55	53	52	51
Weight	kg	14	14	14	14	14

OTHER GEAR MOTOR DATA

C

Service life	h	3000
Performance tolerances	%	± 15
Operating temperature	°C	-10 to 60
IP rating ¹		IP00
Manufacturing standard		ISO 9001
CE label UL label		No No

BRUSHED DC MOTOR DATA

C

Nominal voltage	V	24
Nominal current	A	22
Nominal speed	rpm	2000
Nominal torque	Ncm	200
Nominal power	W	420
No load current	A	2.5
No load speed	rpm	2400
Start/stall current	A	130
Start/stall torque	Ncm	820
Motor commutation		Carbon brush
Motor rotor		Iron
Motor terminal		Screw terminal
Weight	kg	10.5

GEARBOX DATA

C

Gearbox type		Worm gearbox
Gear angle		Hollow
Material gear		Brass ●
Bearing type		Ball bearing
Shaft material		Hardened stainless steel ●