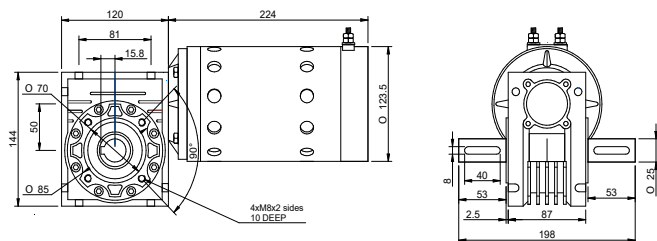
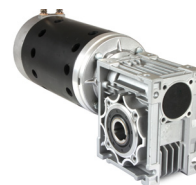


DRAWING (mm)



PHOTO



MODEL NO. DESIGNATION

WHD123224 - VOLTAGE - GEAR RATIO

Example: WHD123224-12-10

ACCESSORIES

● C = customizations are offered on demand even for smaller quantities. Typical customizations are indicated with a green dot at column end. Please contact us for any customization request.

GEAR MOTOR DATA C

Gear ratio		10:1	15:1	20:1	30:1	40:1
Nominal speed	rpm	200	140	100	67	50
Nominal torque	Nm	13	16	21	32	41
Peak torque	Nm	34	44	49	58	68
Nominal power	W	280	230	220	220	210
Gearbox efficiency	%	66	55	53	52	51
Weight	kg	14	14	14	14	14

OTHER GEAR MOTOR DATA C

Service life	h	3000
Performance tolerances	%	± 15
Operating temperature	°C	-10 to 60
IP rating ¹		IP00
Manufacturing standard		ISO 9001
CE label UL label		No No

BRUSHED DC MOTOR DATA C

Nominal voltage	V	12
Nominal current	A	43
Nominal speed	rpm	2000
Nominal torque	Ncm	200
Nominal power	W	420
No load current	A	5.5
No load speed	rpm	2400
Start/stall current	A	260
Start/stall torque	Ncm	820
Motor commutation		Carbon brush
Motor rotor		Iron
Motor terminal		Screw terminal
Weight	kg	10.5

GEARBOX DATA C

Gearbox type	Worm gearbox	
Gear angle	Hollow	
Material gear	Brass	●
Bearing type	Ball bearing	
Shaft material	Hardened stainless steel	●