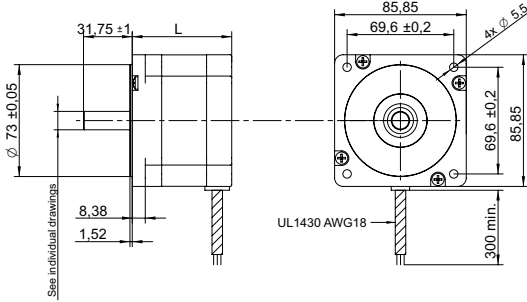
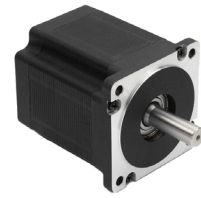


DRAWING (mm)



PHOTO



MODEL NO. DESIGNATION



Example: SHW8665-18-280

OPTIONS DRIVER AND POWER SUPPLY



● C = customizations are offered on demand even for smaller quantities. Typical customizations are indicated with a green dot at column end. Please contact us for any customization request.

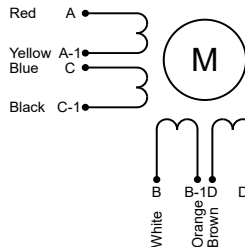
COMMON MOTOR DATA

Step angle	°	1.8	
Step angle accuracy ¹	%	± 5	
Shaft material		X8CrNiS18-9 SUS303	●
Bearing type		Ball bearing	●
Radial play ²	mm	0.02	
Axial play ²	mm	0.08	
Max. radial force ³	N	220	
Max. axial force	N	60	
Dielectric strength ⁴	V	600	
Insulation resistance ⁵	MΩ	100	
Operating temperature	°C	-20 to 50	●
Insulation class		Class B	
IP rating		IP30	●
Connection harness		UL 1430 AWG18 300 mm	●
Connector		Not in standard	●

MODEL-SPECIFIC MOTOR DATA

Model	SHW8665-18-400	SHW8680-18-600	SHW86118-18-600	SHW86156-18-600	
Graph	A	B	C	D	
Holding torque	Nm	3.5	4.5	8.5	12
Detent torque	Nm	0.08	0.12	0.24	0.36
Rotor inertia	gcm ²	1000	1400	2700	4000
Current phase	A	4	6	6	6
Resistance phase	Ω	0.65	0.33	0.5	0.63
Inductance	mH	3.9	3	6	8
Length L	mm	65	80	118	156
Weight	kg	1.7	2.3	3.8	5.3

EXCITATION SEQUENCE TABLE



CW	A	C	B	D
1	●		●	
2		●	●	
3		●		●
4	●			●
1	●		●	

● = +Polarity

SPEED | TORQUE PERFORMANCE GRAPH PULL OUT

Graph	A	B	C	D	
Supply voltage	V	48	48	48	48
Current phase	A	5.6	5.6	5.6	5.6
Phase connection		Parallel connection			

NOTES

1. Full step no load.
2. 450 g load.
3. 20 mm from shaft.
4. AC, 1 second.
5. 500 V, DC.

