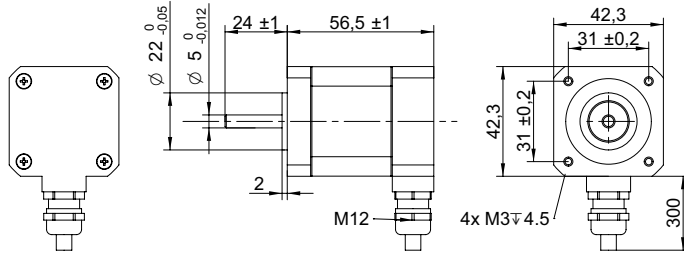


## DRAWING (mm)



## MODEL NO. DESIGNATION

SHW42 LENGTH - STEP ANGLE - CURRENT - IP65

Example: SHW4257-18-170-IP65

## PHOTO



## ACCESSORIES

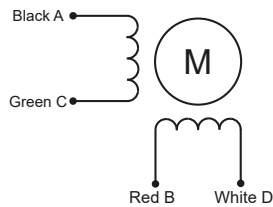


● C = customizations are offered on demand even for smaller quantities. Typical customizations are indicated with a green dot at column end. Please contact us for any customization request.

STEPPING MOTOR DATA		C
Step angle <sup>1</sup>	°	1.8
Step angle accuracy	%	5
Shaft material		SUS303 ●
Bearing type		Ball bearing ●
Radial play <sup>2</sup>	mm	0.02
Axial play <sup>2</sup>	mm	0.08
Max. radial force <sup>3</sup>	N	28
Max. axial force	N	10
Dielectric strength <sup>4</sup>	V	500
Insulation resistance <sup>5</sup>	MΩ	100
Operating temperature	°C	-20 to 50 ●
Storage temperature	°C	-20 to 85
Relative humidity <sup>6</sup>	%	85
Insulation class		B
IP rating		IP65 ●
Harness		UL2464 AWG22 ●
Harness length	mm	300

MODEL-SPECIFIC STEPPING MOTOR DATA		C
Model		SHW4257-18-170-IP65
Graph		A
Holding torque	Nm	0.43
Rotor inertia	gcm <sup>2</sup>	68
Number of phases		2
Voltage per phase	V	2.8
Current per phase	A	1.7
Resistance per phase <sup>7</sup>	Ω	1.7
Inductance per phase <sup>8</sup>	mH	2.8
Length	mm	56.5
Weight	kg	0.4

## EXCITATION SEQUENCE TABLE



CW	A	C	B	D
1	●		●	
2		●	●	
3		●		●
4	●			●
1	●		●	

● = +Polarity

## NOTES

- Full step.
- Max. 4 N.
- 20 mm from flange.
- AC, 60 seconds.
- Measured at 500 V.
- No condensation.
- Measured at 20 °C.
- Measured at 1 kHz.