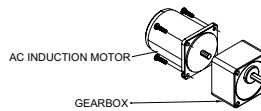
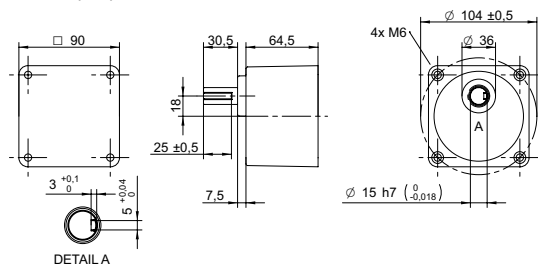


DRAWING (mm)



PHOTO



MODEL NO. DESIGNATION

S90B - GEAR RATIO

Example: S90B-003

ACCESSORIES<sup>1</sup>



C = customizations are offered on demand even for smaller quantities. Typical customizations are indicated with a green dot at column end. Please contact us for any customization request.

GEARBOX DATA

	3	3.6	5	6	7.5	9	10	12.5	15	18	20	25	30	36	40	50	60	75	90	100	120	150	180	200
Gear ratio	3	3.6	5	6	7.5	9	10	12.5	15	18	20	25	30	36	40	50	60	75	90	100	120	150	180	200
Gearb. nom. torq. <sup>2</sup> Nm	20	20	20	20	20	20	20	20	20	20	20	20	20	20	20	20	20	20	20	20	20	20	20	20
Gearbox efficiency %	81	81	81	81	81	81	81	81	81	81	73	73	73	73	73	66	66	66	66	66	66	66	66	66
Radial load <sup>3</sup> N	500	500	500	500	500	500	600	600	600	600	700	700	700	700	700	700	700	700	700	700	700	700	700	700
Direction of rot.	CW	CW	CW	CW	CW	CW	CCW	CCW	CCW	CCW	CW	CW	CW	CW	CW	CW	CW	CW	CCW	CCW	CCW	CCW	CCW	CCW
Weight kg	1.5	1.5	1.5	1.5	1.5	1.5	1.5	1.5	1.5	1.5	1.5	1.5	1.5	1.5	1.5	1.5	1.5	1.5	1.5	1.5	1.5	1.5	1.5	1.5

OTHER GEARBOX DATA

Shaft axial load	N	150
Bearing type		Ball bearing
Shaft material		40 Cr steel
Housing material		Aluminum
Material gear stage		40 Cr steel
Service life	h	10000
Performance tolerances		± 15
Operating temperature	°C	-10 to 40
IP rating		IP20
Manufacturing standard		ISO 9001
CE label   UL label		No   No

SPUR GEARBOX RANGE S SERIES<sup>4</sup>

Dimension	mm	See separate datasheet.
Gear ratio	W	See separate datasheet.
Compatible models	mm	See separate datasheet.

NOTES

1. See page 2 of this datasheet.
2. Gearbox nominal torque.
3. 20 mm from shaft.
4. Visit [www.transmotec.com](http://www.transmotec.com) to view datasheets.

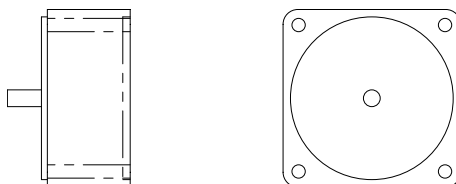
COMPATIBLE MOTORS<sup>4</sup>

Model	AI-090W-230-SC	AI-090W-400-TC	AI-090W-120-SC/B	AI-090W-208-TC	AIR-090W-230-SC	AIR-090W-120-SC	AIS-090W-230-SC	AIS-090W-120-SC
No. of phases	1	3	1	3	1	3	1	3
Frequency Hz	50	50	60	60	50	60	50	60
Nominal speed rpm	1300	1300	1600	1600	1300	1600	90 to 1200	90 to 1200
Nominal torque mNm	700	700	570	570	700	570	710	710
Nominal current A	0.7	0.35	1.5	0.55	0.81	1.5	0.95	1.8
Nominal power W	90	90	90	90	90	90	90	90
Nom. speed at 50:1 rpm	25	25	31	31	25	31	24	24
Nom. torque at 50:1 Nm	20	20	20	20	20	20	20	20

COMPATIBLE MOTORS<sup>4</sup>

Model	AI-120W-230-SC	AI-120W-400-TC	AI-120W-120-SC/B	AI-120W-208-TC	AIR-120W-230-SC	AIR-120W-120-SC	AIS-120W-230-SC	AIS-120W-120-SC
No. of phases	1	3	1	3	1	3	1	3
Frequency Hz	50	50	60	60	50	60	50	60
Nominal speed rpm	1300	1300	1600	1600	1300	1600	90 to 1200	90 to 1200
Nominal torque mNm	930	930	750	750	930	750	750	750
Nominal current A	0.95	0.4	1.8	0.6	1.2	1.9	1.2	1.9
Nominal power W	120	120	120	120	120	120	120	120
Nom. speed at 50:1 rpm	25	25	31	31	25	31	24	24
Nom. torque at 50:1 Nm	20	20	20	20	20	20	20	20

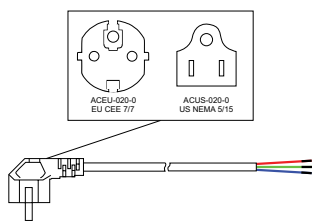
## DECIMAL GEARBOX<sup>1</sup>



### DECIMAL GEARBOX DATA

Model designation	S60A-Y010	S70A-Y010	S80A-Y010	S90A-Y010	S90B-Y010	
Gear ratio	10:1	10:1	10:1	10:1	10:1	
Gearbox nominal torque	Nm	3	5	8	10	20
Description	Connected between AC motor and existing gearbox to decrease the speed further than the gear ratio listed in the table.					
Compatible models	AIR-006W	AIR-015W	AIR-025W	AIR-040W   AIR-060W	AIR-090W   AIR-120W	

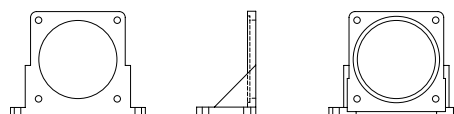
## POWER CABLE



### POWER CABLE DATA

Model designation	ACEU-020-0   ACUS-020-0	
Standard	EU CEE 7/7   US NEMA 5/15	
Cable length	m   ft	2   8
Compatible models	All	

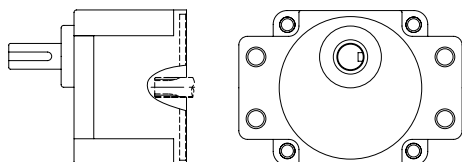
## MOUNTING BRACKET



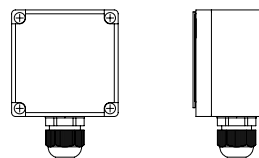
### MOUNTING BRACKET DATA

Model designation	AMB-080	AMB-090	
Dimensions	mm	80x80	90x90
Compatible models	AIR-025W   AIR-040W   AIR-060W	AIR-090W   AIR-120W	

## GEARBOX FLANGE MOUNTING



## TERMINAL BOX



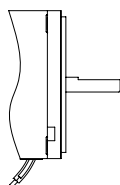
### GEARBOX FLANGE MOUNTING DATA

Model designation	Contact us for more information.
Compatible models	AIR-090W   AIR-120W

### TERMINAL BOX DATA

Model designation	See model no. designation to order correct part number.
Compatible models	AIR-025W   AIR-040W   AIR-060W   AIR-090W   AIR-120W

## OUTPUT SHAFT D-CUT



## NOTES

1. Visit [www.transmotec.com](http://www.transmotec.com) to view datasheets.

### OUTPUT SHAFT D-CUT DATA

Model designation	Contact us for more information.
Compatible models	All