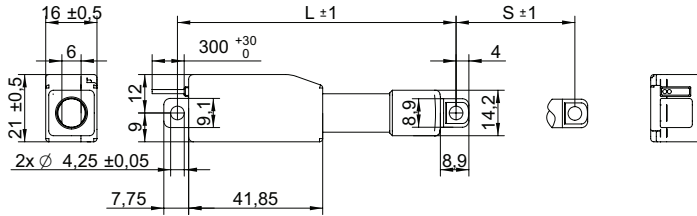


## DRAWING (mm)



## PHOTO



## MODEL NO. DESIGNATION



Example: MLA-12-100-T-100-LT-IP69K

## ACCESSORIES



● C = customizations are offered on demand even for smaller quantities. Typical customizations are indicated with a green dot at column end. Please contact us for any customization request.

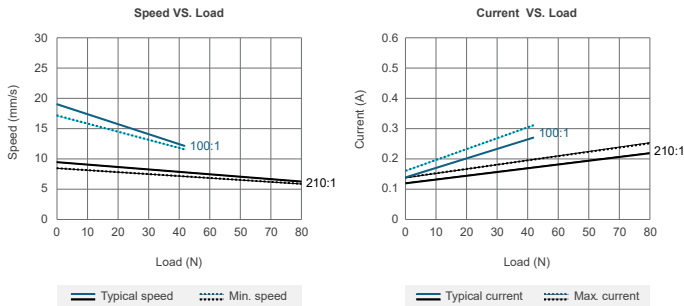
## ACTUATOR DATA

				C
Gear ratio		100:1	210:1	
Voltage	V	12	12	
No load current	A	0.14	0.12	
Full load current	A	0.27	0.22	
Duty cycle	%	20	20	
Push/pull max. load	N	42	80	
Max. static load	N	21	40	
No load speed	mm/s	19	12	
Full load speed	mm/s	9.5	6.3	

## ACTUATOR STROKE DATA

		C			
Stroke length   S	mm	10	30	50	100
Retracted length   L	mm	67	87	107	157
Lifetime number single strokes		20000	6600	4000	2000
Weight	g	30	40	50	60

## ACTUATOR PERFORMANCE GRAPHS



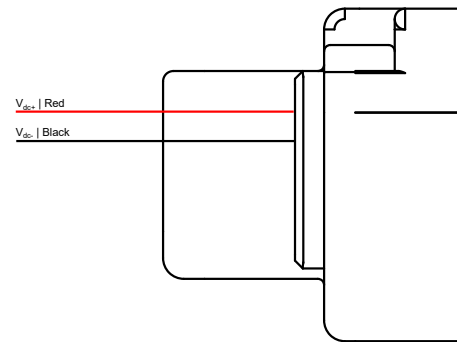
## NOTES

1. IP66 in dynamic loads, IP69K in static loads.

## ACTUATOR FEATURES

		C	
Motor type		Permanent magnet DC motor	
Power cable		AWG26	
Cable length	mm	300	●
Screw type		Trapezoidal screw	
Limit switch		Yes	
Feedback		No	
Max. duty operational time	s	30	
IP rating <sup>1</sup>		IP66   IP69K	
EMC		EMC Directive 2014/30/EU	
Operating temperature	°C	-10 to 50	
Manufacturing standard		ISO 9001:2015	
Performance tolerances	%	±15	
Noise level	db(A)	55	
Storage temperature	°C	-25 to 65	
Housing material		Plastic	
Rod and inner tube material		Aluminum	

## ACTUATOR WIRING DIAGRAM



## ACTUATOR WIRING CONFIGURATION

Wire	Definition	Description
Red	DC power	Connect red wire to "Vdc+" and black wire to "Vdc-" of DC power to extend the actuator. Switch the polarity of DC input to retract it.
Black		