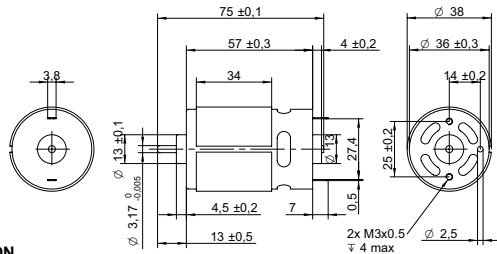


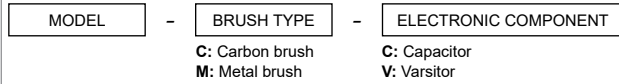
DRAWING (mm)



PHOTO



MODEL NO. DESIGNATION



Example: KD3SFN-8518-CC

OPTIONS POWER SUPPLIES



● C = customizations are offered on demand even for smaller quantities. Typical customizations are indicated with a green dot at column end. Please contact us for any customization request.

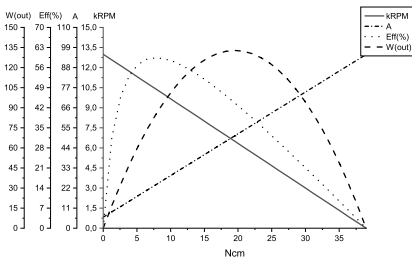
MOTOR DATA

Model number		KD3SFN-8518-CC	KS3SFN-7520F-CC	KP3SFN-8020F-CC	KV3SFN-7525F-CC	C
Diameter	mm	38	38	38	38	
Length	mm	57	57	57	57	
Nominal voltage	V	6	7.2	7.2	12	●
No load current	A	6	1.3	1.5	1.2	●
Nominal current	A	10.2	10.4	9.6	9.8	●
Start/Stall current	A	95	60	72	83	●
No load speed	rpm	13000	15000	14000	18000	●
Nominal speed	rpm	12000	12000	12000	16000	●
Nominal torque	mNm	36	42	40	57	●
Start/Stall torque	mNm	390	280	340	530	●
Nominal power	W	46	54	52	95	●
Efficiency	%	75	72	76	81	

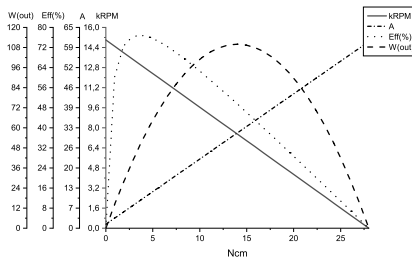
COMMON MOTOR DATA

Shaft diameter	mm	3.17	C
Number of pole pairs		1	
Number of commutator segments		3	
Weight	g	300	
Service life	hrs	500 to 1000	
Operating temperature	°C	-10 to +60	●
Housing material		Galvanized steel	
Shaft material		High-carbon steel	●
Magnet material		Ferrite	
IP rating		IP40	
Motor insulation class		Level A	●

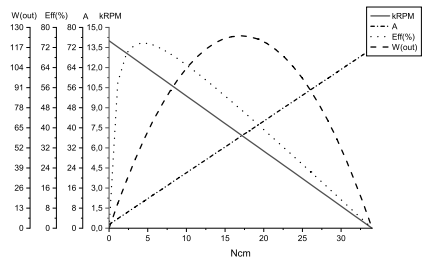
MOTOR DATA GRAPH - KD3SFN-8518-CC



MOTOR DATA GRAPH - KS3SFN-7520F-CC



MOTOR DATA GRAPH - KP3SFN-8020F-CC



MOTOR DATA GRAPH - KV3SFN-7525F-CC

