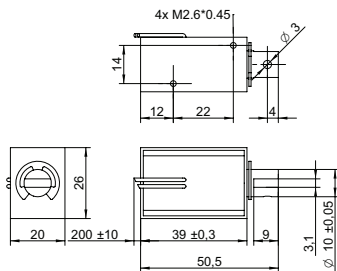


## DRAWING (mm)



## PHOTO



## MODEL NO. DESIGNATION

F1039L - VOLTAGE

Example: F1039L-06V

## ACCESSORIES

● C = customizations are offered on demand even for smaller quantities. Typical customizations are indicated with a green dot at column end. Please contact us for any customization request.

## SOLENOID DATA

Parameter	Unit	100%	50%	25%	10%
Duty cycle	%	100	50	25	10
Power	W	2.8	5.6	11	28
Max. time in energized state	s	∞	140	50	9

## PERFORMANCE DATA F1039L-06V

Parameter	Unit	100%	50%	25%	10%
Duty cycle	%	100	50	25	10
Individual voltages	V	6	8.5	12	19
Resistance	Ω	13			

## PERFORMANCE DATA F1039L-12V

Parameter	Unit	100%	50%	25%	10%
Duty cycle	%	100	50	25	10
Individual voltages	V	12	17	24	38
Resistance	Ω	51			

## PERFORMANCE DATA F1039L-24V

Parameter	Unit	100%	50%	25%	10%
Duty cycle	%	100	50	25	10
Individual voltages	V	24	34	48	76
Resistance	Ω	206			

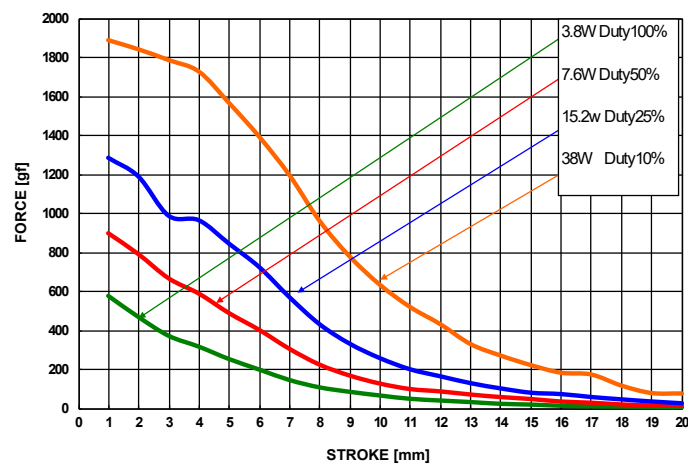
## PERFORMANCE DATA F1039L-48V

Parameter	Unit	100%	50%	25%	10%
Duty cycle	%	100	50	25	10
Individual voltages	V	48	68	96	152
Resistance	Ω	823			

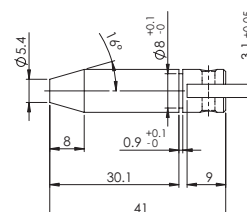
## SOLENOID FEATURES AND STANDARD DATA

Type	Pull type DC solenoid	●
Nominal voltage range <sup>1</sup>	V	6 to 48
Loading force <sup>2</sup>	N	0.59
Cable	Flying wires	●
Cable length	mm	230
Service life		At least 500000 single strokes
Return spring		Yes
Plunger material		Carbon steel 12L14
IP rating		IP00
Insulation class		B
Weight	g	110
Operating temperature	°C	-5 to 40
Manufacturing standard		ISO9001:2008   ISO/TS 16949:2002
CE label   UL label		No   No

## PERFORMANCE GRAPH



## PLUNGER PROFILE



## NOTES

- Nominal voltages, 100 % duty cycle.
- At 5 mm compression.