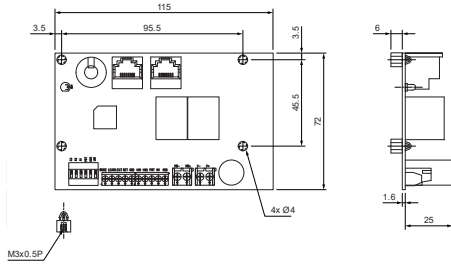


DRAWING (mm)



PHOTO



MODEL NO. DESIGNATION

DDHS - NUMBER OF ACTUATORS

Example: DDHS-12-1

ACCESSORIES

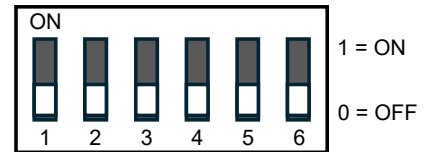


● C = customizations are offered on demand even for smaller quantities. Typical customizations are indicated with a green dot at column end. Please contact us for any customization request.

ACTUATOR CONTROL BOX DATA C

Mode	Synchronous	
Number of actuators ¹	1	
Compatible controller	HDL-DDHS-1	
Compatible actuators ²	Transmotec DLA series, DLB series, and DMA series.	
Output voltage	V	12 24
Output current ³	A	16 10
Duty cycle ⁴	%	15
Input voltage range	V	12 24
Power cable ⁵	AWG18	
Power cable length ⁵	m	2
CE label	Yes	
EMC	EMC Directive 2014/30/EU	
Operating temperature	°C	-20 to 55
Weight	g	90
Controller terminal	7-pin DIN socket	

DIP SWITCH



DIP SWITCH SETTINGS

Definition	Number	Setting
Preset limit switches	1	0
No limit switches	1	1
Dual Hall effect sensors	1, 2	00
Single Hall effect sensors	1, 2	10
Potentiometer	1, 2	01

Please note that when connecting multiple actuators, the main control box must have DIP switches 4, 5, and 6 set to "000". The remaining control boxes must have unique settings on DIP switches 4, 5, and 6.

OPERATION GUIDANCE

Before installation, ensure that all actuators in the system are fully retracted.

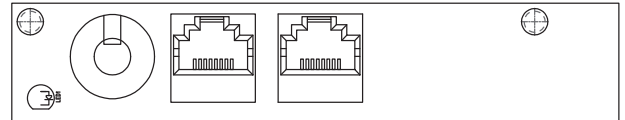
For synchronization of multiple actuators, all actuators must be of the same model and dimensions to ensure desired operation.

Note that the exact wiring configuration of the actuators depends on several conditions, including the type of actuators connected.

NOTES

- Up to 8 sets of DDHS-1 can be connected to achieve synchronous control of 8 actuators.
- With Hall sensor feedback-NPN type or Potentiometer positioning feedback.
- Max. current limit for each actuator. 16 A at 12 V or 10 A at 24 V.
- Max. 2 min continuous operation.
- No cables included. Recommended specification for use AWG 18, length 2 m.

SYNCHRONOUS COMMUNICATION PORTS



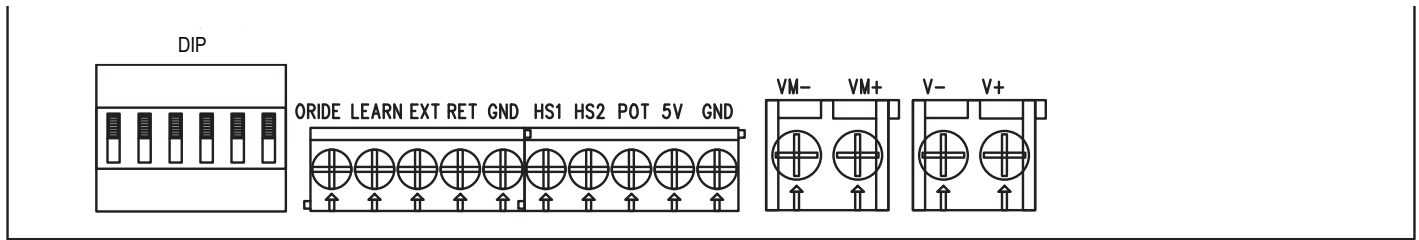
SYNCHRONOUS COMMUNICATION CONFIGURATION

Use an RJ45 ethernet cable that meets CAT 5 or above specification.

When connecting four DDHS-1 in synchronous connection, ensure that the vacant ports have a terminal resistor attached.

After the synchronous communication cable is connected first, insert it into the vacant RJ45 socket. There is no distinction between the left and right positions.

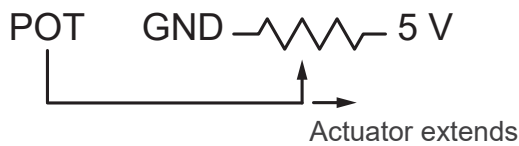
FRONT TERMINALS



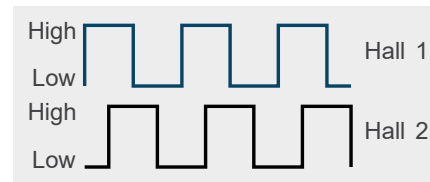
TERMINAL CONFIGURATION

Terminal	Description
DIP	DIP switch. See "DIP SWITCH SETTINGS".
ORIDE	Offline or connection switching. ¹
LEARN	Triggered after switching on for more than 2 seconds. The system will automatically learn the stroke of the actuators.
EXT	Actuator extends when switch on.
RET	Actuator retracts when switch on.
GND	Ground.
HS1	Hall signal 1 input. ²
HS2	Hall signal 2 input.
POT	Voltage input from potentiometer. Wiring according to "POTENTIOMETER WIRING".
5V	5 V power output, for the actuator's Hall module or Potentiometer, depending on which is present.
GND	Ground.
VM-	24 V output, maximum 10 A. When controlling the actuator to extend, VM+ and VM- are VDC+ and VDC-, respectively. When retracting the actuator, the polarity is reversed.
VM+	
V-	Ground.
V+	Nominal 24 V (voltage range 20 V ~ 32 V). ³

POTENTIOMETER WIRING



HALL SIGNAL DATA



NOTES

- For terminals GND, RET, EXT, LEARN, ORIDE, the recommended wire gauge is AWG24.
- When controlling a single Hall sensor actuator, only use terminal HS1.
- A 2-wire AWG18 power cord is recommended for nominal loads.