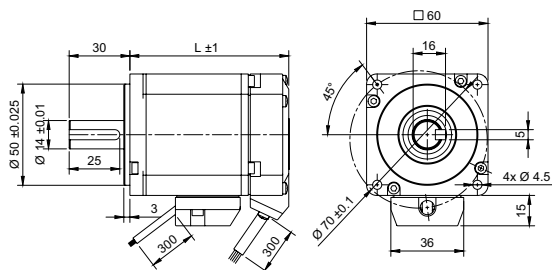
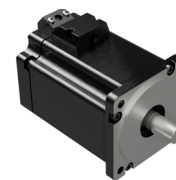


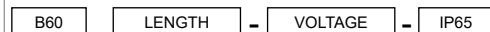
DRAWING (mm)



PHOTO



MODEL NO. DESIGNATION



Example: B6079-48-IP65

ACCESSORIES



● C = customizations are offered on demand even for smaller quantities. Typical customizations are indicated with a green dot at column end. Please contact us for any customization request.

BRUSHLESS DC MOTOR DATA	B6079-48-IP65	B6099-IP65	C	OTHER BRUSHLESS DC MOTOR DATA	B6079-48-IP65	B6099-IP65	C
Nominal voltage	V	48	48	Number of pole pairs		10	
No load speed	rpm	5000	5200	Number of phases		3	
No load current	A	0.6	1.3	Weight	kg	0.95	1.3
Nominal speed	rpm	3000	3000	Operating temperature	°C	-20 to 50	
Nominal torque	Nm	0.64	1.3	Storage temperature <sup>7</sup>	°C	-20 to 85	
Nominal current	A	6	13	Winding type		Star connection	
Peak current	A	18	39	Motor insulation class		F	
Peak torque	Nm	1.9	3.8	IP rating		IP65	
Efficiency	%	69	66	Hall sensors and power harness length	mm	300	
Nominal power	W	200	410	Power harness		AWG19	
Terminal resistance <sup>1</sup>	Ω	0.42	0.19	Hall sensors harness		AWG26	
Terminal inductance <sup>2</sup>	mH	0.65	0.38	Motor length	mm	79	99
Insulation resistance <sup>3</sup>	MΩ	100	100	Shaft length from flange	mm	30	
Dielectric strength <sup>4</sup>	V	600	600	Shaft diameter	mm	14	
Back EMF	V/rpm	0.007	0.007	Service life	h	10000	
Torque constant	Nm/A	0.11	0.11	Manufacturing standard		ISO 9001:2015   ISO 14001   IATF 16949	
Rotor inertia	kgcm <sup>2</sup>	0.2	0.39				
Bearing type		Ball bearing					
Axial play <sup>5</sup>	mm	0.08					
Radial play <sup>5</sup>	mm	0.02					
Max. dynamic axial load	N	98					
Max. radial load <sup>6</sup>	N	250					

CABLE AND PIN CONFIGURATION

Wire	Definition	Color
U		Yellow
V	Power	Red
W		Black
HU		Blue
HV		Green
HW	Hall	White
Vcc		Red
GND		Black

NOTES

1. Measured at 20°C.
2. Measured at 1 kHz.
3. Measured at 500 V.
4. At a duration of 1 second.
5. Max. 4 N.
6. 13 mm from flange.
7. In storage, relative humidity less than 85%.