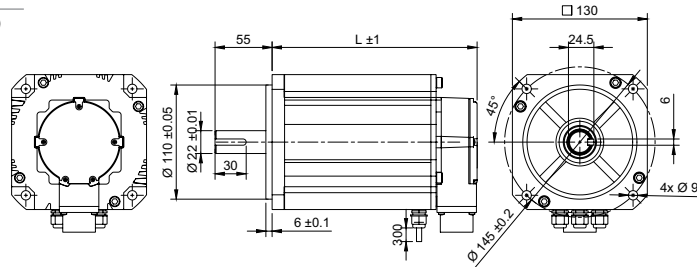


DRAWING (mm)



PHOTO



MODEL NO. DESIGNATION

B130 LENGTH - VOLTAGE - IP65

Example: B130165-48-IP65

ACCESSORIES



C = customizations are offered on demand even for smaller quantities. Typical customizations are indicated with a green dot at column end. Please contact us for any customization request.

BRUSHLESS DC MOTOR DATA	B130165-48-IP65	B130198-48-IP65	C	OTHER BRUSHLESS DC MOTOR DATA	B130165-48-IP65	B130198-48-IP65	C
Nominal voltage	V	48	48	Number of pole pairs		10	
No load speed	rpm	2800	2900	Number of phases		3	
No load current	A	5.3	7.9	Weight	kg	7.5	13
Nominal speed	rpm	2000	2000	Operating temperature	°C	-20 to 50	
Nominal torque	Nm	9.6	14	Storage temperature <sup>7</sup>	°C	-20 to 85	
Nominal current	A	53	79	Winding type		Star connection	
Peak current	A	160	240	Motor insulation class		F	
Peak torque	Nm	29	43	IP rating		IP65	
Efficiency	%	79	76	Hall sensors and power harness length	mm	300	
Nominal power	W	2000	2900	Power harness		AWG8	
Terminal resistance <sup>1</sup>	Ω	0.03	0.019	Hall sensors harness			
Terminal inductance <sup>2</sup>	mH	0.13	0.1	Motor length	mm	165	197.5
Insulation resistance <sup>3</sup>	MΩ	100	100	Shaft length from flange	mm	55	
Dielectric strength <sup>4</sup>	V	600	600	Shaft diameter	mm	22	
Back EMF	V/rpm	0.012	0.012	Service life	h	10000	
Torque constant	Nm/A	0.2	0.2	Manufacturing standard		ISO 9001:2015   ISO 14001   IATF 16949	
Rotor inertia	kgcm <sup>2</sup>	14	20				
Bearing type		Ball bearing					
Axial play <sup>5</sup>	mm	0.02					
Radial play <sup>5</sup>	mm	0.08					
Max. dynamic axial load	N	490					
Max. radial load <sup>6</sup>	N	200					

CABLE AND PIN CONFIGURATION

Wire	Definition	Color
U		Yellow
V	Power	Red
W		Black
H1	Hall	Blue
H2		Green
H3		White
Vcc		Red
GND		Black

NOTES

1. Measured at 20°C.
2. Measured at 1 kHz.
3. Measured at 500 V.
4. At a duration of 1 second.
5. Max. 4 N.
6. 20 mm from flange.
7. In storage, relative humidity less than 85%.