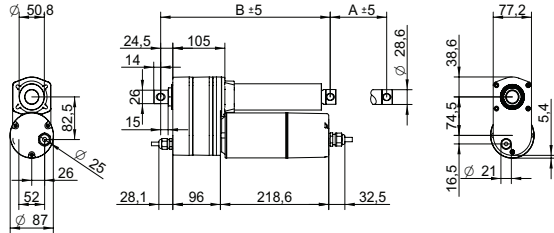


DRAWING (mm)



PHOTO



MODEL NO. DESIGNATION

AMA - VOLTAGE - GEAR RATIO - B - STROKE - POT - IP65

Example: AMA-230-20-B-305-POT-IP65

ACCESSORIES



C = customizations are offered on demand even for smaller quantities. Typical customizations are indicated with a green dot at column end. Please contact us for any customization request.

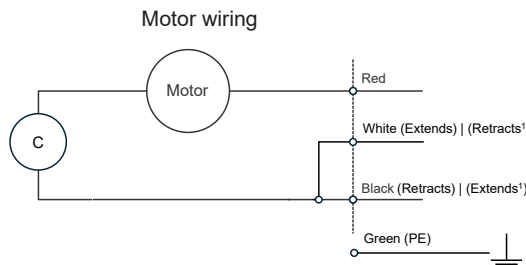
ACTUATOR DATA

		5:1	10:1	20:1	30:1	40:1	C
Gear ratio		5:1	10:1	20:1	30:1	40:1	●
Voltage	V	115 230	115 230	115 230	115 230	115 230	
Frequency	Hz	60 50	60 50	60 50	60 50	60 50	
Current at nominal dynamic load	A	3.5 1.8	3.1 1.8	2.7 1.9	2.7 1.9	2.7 1.9	
Nominal dynamic load	N	2600	3500	4500	6000	7000	
Max. static load	N	14000	14000	14000	14000	14000	
Speed at nominal dynamic load	mm/s	41 29	23 18	12 9.3	7.9 6.3	6 4.9	
Speed at no load	mm/s	67	34	17	11	8.4	

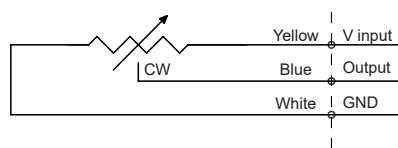
ACTUATOR STROKE DATA

		102	153	203	305	457	610	C
Stroke length A	mm	102	153	203	305	457	610	●
Retracted length B	mm	342	393	444	546	775	928	
Feedback	Ω/mm	100	67	50	33	22	17	
Life time number single strokes		39000	26000	20000	13000	8700	6500	
Weight	kg	4.3	4.6	4.9	5.4	6.2	7.8	

WIRING DIAGRAMS¹



Potentiometer wiring



NOTES

1. For gear ratios 30:1 and 40:1, White retracts and Black extends.

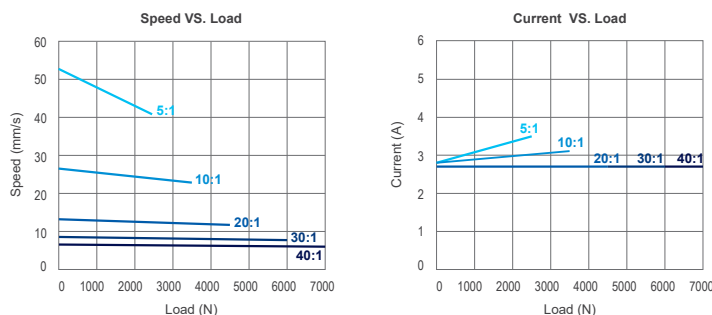
ACTUATOR FEATURES

			C
Type		Electric linear actuator	
Motor type		Single phase AC induction motor	
Cable type		Flying wire (4+2 wires)	●
Power cable		AWG18	
Signal cable		AWG22	
Cable length	mm	600	●
Voltage	V	115 230	●
Screw type		Ball screw	
Noise level	dB(A)	≤ 70	
Life time		4 million mm total stroke	
Limit switches		No	●
Overload protection		By clutch	
Direction movement		By changing neutral cable	
Stroke tolerance	mm	± 2.5	
Duty cycle	%	25	
Max. duty operational time	s	240 nominal dynamic load	
IP rating		IP65	
Insulation class		F	
Max. motor winding temp.	°C	105	
EMC		EMC Directive 2014/30/EU	
Gear box		Metal spur gears	
Gear box material		Aluminum alloy	
Rod and house material		Steel 12L14 STKM11A	
Feedback		Potentiometer	
Operating and storage temperature	°C	-25 to 65	●
Manufacturing standards		ISO 9001:2015	
Performance tolerance	%	± 15	

POTENTIOMETER DATA

			C
Potentiometer type		Wire wound	
Resistance	kΩ	0.3 to 9.7	
Resolution	%	0.025	
Resistance tolerance	%	± 5	
Linearity	%	± 0.25	

MOTOR GRAPHS 115 V



MOTOR GRAPHS 230 V

