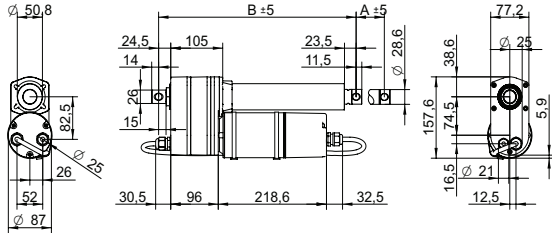


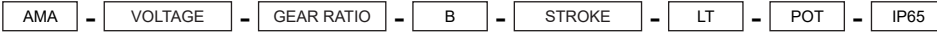
DRAWING (mm)



PHOTO



MODEL NO. DESIGNATION



Example: AMA-230-20-B-305-LT-POT-IP65

ACCESSORIES



C = customizations are offered on demand even for smaller quantities. Typical customizations are indicated with a green dot at column end. Please contact us for any customization request.

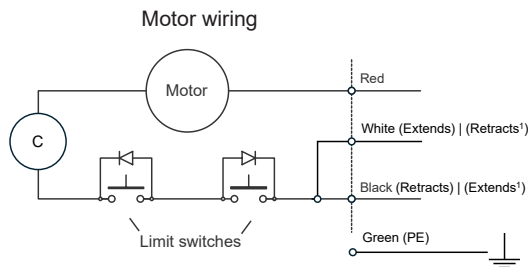
ACTUATOR DATA C

Parameter	5:1	10:1	20:1	30:1	40:1	
Gear ratio	5:1	10:1	20:1	30:1	40:1	●
Voltage	V 115   230	115   230	115   230	115   230	115   230	
Frequency	Hz 60   50	60   50	60   50	60   50	60   50	
Current at nominal dynamic load	A 3.5   1.8	3.1   1.8	2.7   1.9	2.7   1.9	2.7   1.9	
Nominal dynamic load	N 2600	3500	4500	6000	7000	
Max. static load	N 14000	14000	14000	14000	14000	
Speed at nominal dynamic load	mm/s 41   29	23   18	12   9.3	7.9   6.3	6   4.9	
Speed at no load	mm/s 67	34	17	11	8.4	

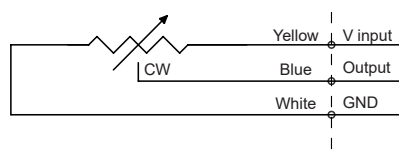
ACTUATOR STROKE DATA C

Parameter	102	153	203	305	457	610	
Stroke length   A	mm 102	153	203	305	457	610	●
Retracted length   B	mm 399	450	501	680	832	985	
Feedback	Ω/mm 100	67	50	33	22	17	
Life time number single strokes	39000	26000	20000	13000	8700	6500	
Weight	kg 4.3	4.6	4.9	5.4	6.2	7.8	

WIRING DIAGRAMS<sup>1</sup>



Potentiometer wiring



NOTES

1. For gear ratios 30:1 and 40:1, White retracts and Black extends.

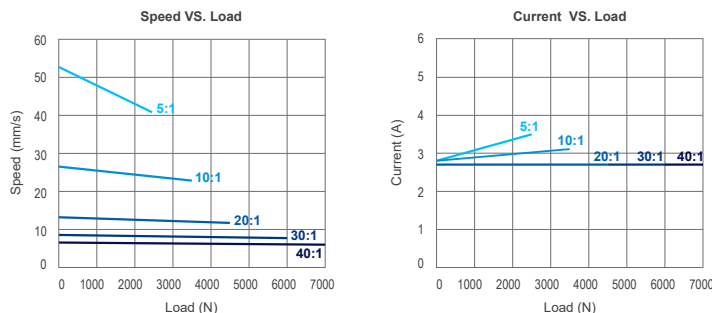
ACTUATOR FEATURES C

Type	Electric linear actuator	
Motor type	Single phase AC induction motor	
Cable type	Flying wire (4+2 wires)	●
Power cable	AWG18	
Signal cable	AWG22	
Cable length	mm 600	●
Voltage	V 115   230	●
Screw type	Ball screw	
Noise level	dB(A) ≤ 70	
Life time	4 million mm total stroke	
Limit switches	Yes	
Overload protection	By clutch	
Direction movement	By changing neutral cable	
Stroke tolerance	mm ± 2.5	
Duty cycle	% 25	
Max. duty operational time	s 240 nominal dynamic load	
IP rating	IP65	
Insulation class	F	
Max. motor winding temp.	°C 105	
EMC	EMC Directive 2014/30/EU	
Gear box	Metal spur gears	
Gear box material	Aluminum alloy	
Rod and house material	Steel 12L14 STKM11A	
Feedback	Potentiometer	
Operating and storage temperature	°C -25 to 65	●
Manufacturing standards	ISO 9001:2015	
Performance tolerance	% ± 15	

POTENTIOMETER DATA C

Potentiometer type	Wire wound	
Resistance	kΩ 0.3 to 9.7	
Resolution	% 0.025	
Resistance tolerance	% ± 5	
Linearity	% ± 0.25	

MOTOR GRAPHS 115 V



MOTOR GRAPHS 230 V

