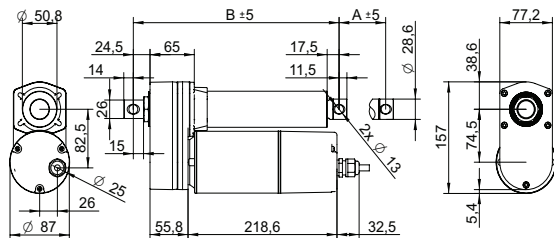


DRAWING (mm)



PHOTO



MODEL NO. DESIGNATION

AMA - VOLTAGE - GEAR RATIO - B - STROKE - IP65

Example: AMA-230-20-B-305-IP65

ACCESSORIES



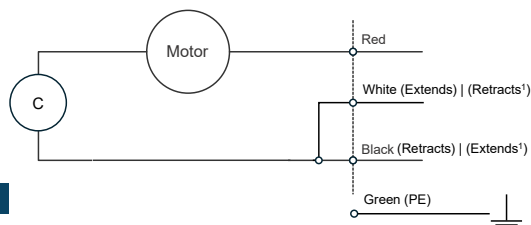
● C = customizations are offered on demand even for smaller quantities. Typical customizations are indicated with a green dot at column end. Please contact us for any customization request.

ACTUATOR DATA							C
Gear ratio		5:1	10:1	20:1	30:1	40:1	●
Voltage	V	115 230	115 230	115 230	115 230	115 230	
Frequency	Hz	60 50	60 50	60 50	60 50	60 50	
Current at nominal dynamic load	A	3.5 1.8	3.1 1.8	2.7 1.9	2.7 1.9	2.7 1.9	
Nominal dynamic load	N	2600	3500	4500	6000	7000	
Max. static load	N	14000	14000	14000	14000	14000	
Speed at nominal dynamic load	mm/s	41 29	23 18	12 9.3	7.9 6.3	6 4.9	
Speed at no load	mm/s	67	34	17	11	8.4	

ACTUATOR STROKE DATA								C
Stroke length A	mm	102	153	203	305	457	610	●
Retracted length B	mm	302	353	404	506	735	888	
Life time number single strokes		39000	26000	20000	13000	8700	6500	
Weight	kg	4.3	4.6	4.9	5.4	6.2	7.8	

WIRING DIAGRAMS¹

Motor wiring

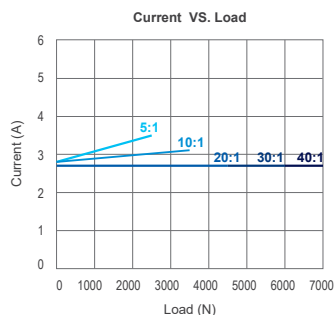
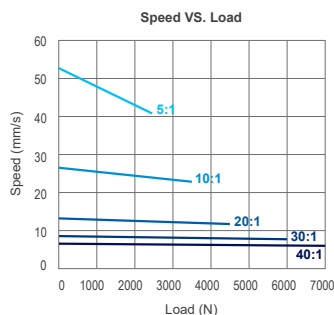


NOTES

1. For gear ratios 30:1 and 40:1, White retracts and Black extends.

ACTUATOR FEATURES			C
Type	Electric linear actuator		
Motor type	Single phase AC induction motor		
Cable type	Flying wire (4 wires)		●
Power cable	AWG18		
Cable length	mm	600	●
Voltage	V	115 230	●
Screw type	Ball screw		
Noise level	dB(A)	≤ 70	
Life time	4 million mm total stroke		
Limit switches	No		●
Overload protection	By clutch		
Direction movement	By changing neutral cable		
Stroke tolerance	mm	± 2.5	
Duty cycle	%	25	
Max. duty operational time	s	240 nominal dynamic load	
IP rating	IP65		
Insulation class	F		
Max. motor winding temp.	°C	105	
EMC	EMC Directive 2014/30/EU		
Gear box	Metal spur gears		
Gear box material	Aluminum alloy		
Rod and house material	Steel 12L14 STKM11A		
Feedback options	Potentiometer		
Operating and storage temperature	°C	-25 to 65	●
Manufacturing standards	ISO 9001:2015		
Performance tolerance	%	± 15	

MOTOR GRAPHS 115 V



MOTOR GRAPHS 230 V

