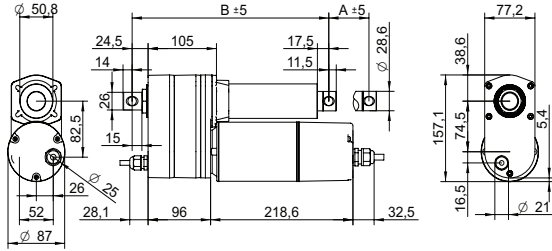


### DRAWING (mm)



### PHOTO



### MODEL NO. DESIGNATION



Example: AMA-230-20-A-305-POT-IP65

### ACCESSORIES

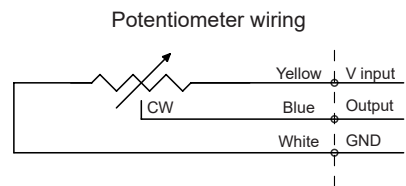
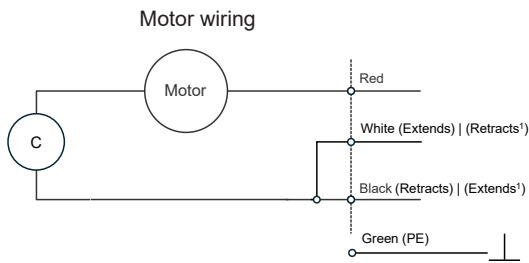


● C = customizations are offered on demand even for smaller quantities. Typical customizations are indicated with a green dot at column end. Please contact us for any customization request.

ACTUATOR DATA					C
Gear ratio		10:1	20:1	40:1	●
Voltage	V	115   230	115   230	115   230	
Frequency	Hz	60   50	60   50	60   50	
Current at nominal dynamic load	A	3.1   1.8	2.7   1.9	2.7   1.9	
Nominal dynamic load	N	1500	2500	3500	
Max. static load	N	4500	4500	4500	
Speed at nominal dynamic load	mm/s	23   18	12   9.3	6   4.9	
Speed at no load	mm/s	34	17	8.4	

ACTUATOR STROKE DATA								C
Stroke length   A	mm	102	153	203	305	457	610	●
Retracted length   B	mm	302	353	404	505	708	861	
Feedback	Ω/mm	100	67	50	33	22	17	
Life time number single strokes		39000	26000	20000	13000	8700	6500	
Weight	kg	4.3	4.6	4.9	5.4	6.2	7.8	

### WIRING DIAGRAMS<sup>1</sup>



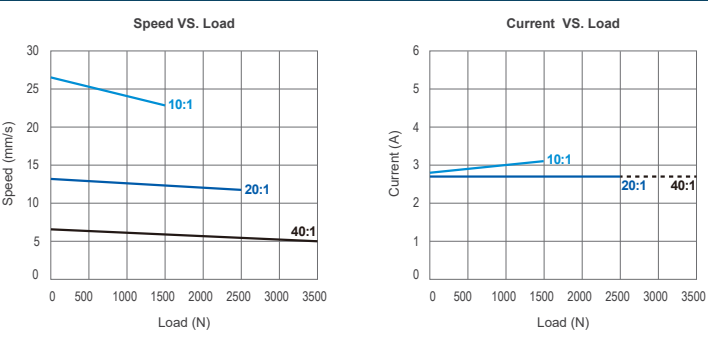
### NOTES

1. For gear ratio 40:1, White retracts and Black extends.

ACTUATOR FEATURES			C
Type	Electric linear actuator		
Motor type	Single phase AC induction motor		
Cable type	Flying wire (4+2 wires)		●
Power cable	AWG18		
Signal cable	AWG22		
Cable length	mm	600	●
Voltage	V	115   230	●
Screw type	ACME		
Noise level	dB(A)	≤ 70	
Life time	4 million mm total stroke		
Limit switches	No		●
Overload protection	By clutch		
Direction movement	By changing neutral cable		
Stroke tolerance	mm	± 2.5	
Duty cycle	%	25	
Max. duty operational time	s	240 nominal dynamic load	
IP rating	IP65		
Insulation class	F		
Max. motor winding temp.	°C	105	
EMC	EMC Directive 2014/30/EU		
Gear box	Metal spur gears		
Gear box material	Aluminum alloy		
Rod and house material	Steel 12L14 STKM11A		
Feedback	Potentiometer		
Operating and storage temperature	°C	-25 to 65	●
Manufacturing standards	ISO 9001:2015		
Performance tolerance	%	± 15	

POTENTIOMETER DATA			C
Potentiometer type	Wire wound		
Resistance	kΩ	0.3 to 9.7	
Resolution	%	0.025	
Resistance tolerance	%	± 5	
Linearity	%	± 0.25	

### MOTOR GRAPHS 115 V



### MOTOR GRAPHS 230 V

