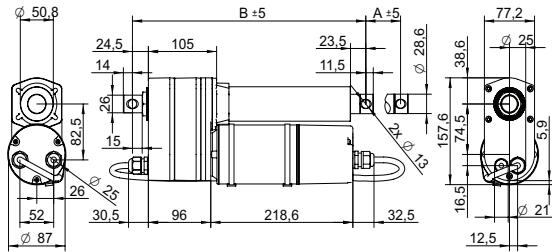


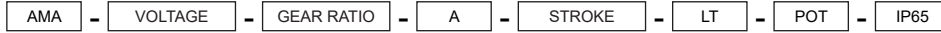
DRAWING (mm)



PHOTO



MODEL NO. DESIGNATION



Example: AMA-230-20-A-305-LT-POT-IP65

ACCESSORIES

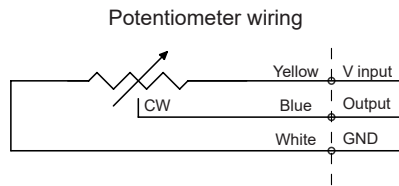
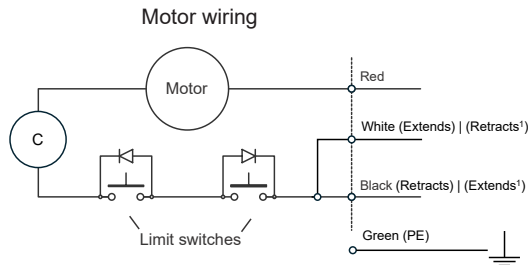


● C = customizations are offered on demand even for smaller quantities. Typical customizations are indicated with a green dot at column end. Please contact us for any customization request.

| ACTUATOR DATA | | | | | C |
|---------------------------------|------|-----------|-----------|-----------|---|
| Gear ratio | | 10:1 | 20:1 | 40:1 | ● |
| Voltage | V | 115 230 | 115 230 | 115 230 | |
| Frequency | Hz | 60 50 | 60 50 | 60 50 | |
| Current at nominal dynamic load | A | 3.1 1.8 | 2.7 1.9 | 2.7 1.9 | |
| Nominal dynamic load | N | 1500 | 2500 | 3500 | |
| Max. static load | N | 4500 | 4500 | 4500 | |
| Speed at nominal dynamic load | mm/s | 23 18 | 12 9.3 | 6 4.9 | |
| Speed at no load | mm/s | 34 | 17 | 8.4 | |

| ACTUATOR STROKE DATA | | | | | | | | C |
|---------------------------------|------|-------|-------|-------|-------|------|------|---|
| Stroke length A | mm | 102 | 153 | 203 | 305 | 457 | 610 | ● |
| Retracted length B | mm | 359 | 410 | 460 | 613 | 765 | 918 | |
| Feedback | Ω/mm | 100 | 67 | 50 | 33 | 22 | 17 | |
| Life time number single strokes | | 39000 | 26000 | 20000 | 13000 | 8700 | 6500 | |
| Weight | kg | 4.3 | 4.6 | 4.9 | 5.4 | 6.2 | 7.8 | |

WIRING DIAGRAMS¹



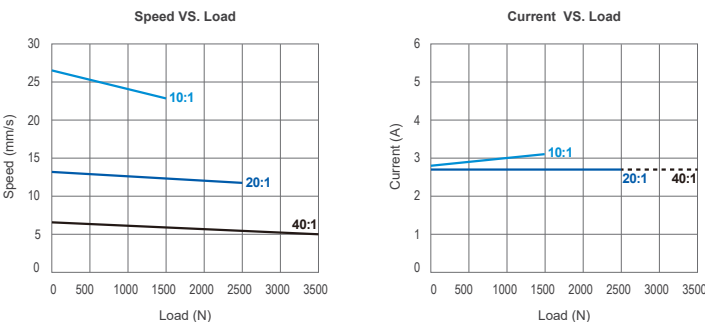
NOTES

1. For gear ratio 40:1, White retracts and Black extends.

| ACTUATOR FEATURES | | | C |
|-----------------------------------|-------|---------------------------|---|
| Type | | Electric linear actuator | |
| Motor type | | Brush PM AC motor | |
| Cable type | | Flying wire (4+2 wires) | ● |
| Power cable | | AWG18 | |
| Signal cable | | AWG22 | |
| Cable length | mm | 600 | ● |
| Voltage | V | 115 230 | ● |
| Screw type | | ACME | |
| Noise level | dB(A) | ≤ 70 | |
| Life time | | 4 million mm total stroke | |
| Limit switches | | Yes | |
| Overload protection | | By clutch | |
| Direction movement | | By changing neutral cable | |
| Stroke tolerance | mm | ± 2.5 | |
| Duty cycle | % | 25 | |
| Max. duty operational time | s | 240 nominal dynamic load | |
| IP rating | | IP65 | |
| Insulation class | | F | |
| Max. motor winding temp. | °C | 105 | |
| EMC | | EMC Directive 2014/30/EU | |
| Gear box | | Metal spur gears | |
| Gear box material | | Aluminum alloy | |
| Rod and house material | | Steel 12L14 STKM11A | |
| Feedback | | Potentiometer | |
| Operating and storage temperature | °C | -25 to 65 | ● |
| Manufacturing standards | | ISO 9001:2015 | |
| Performance tolerance | % | ± 15 | |

| POTENTIOMETER DATA | | | C |
|----------------------|----|------------|---|
| Potentiometer type | | Wire wound | |
| Resistance | kΩ | 0.3 to 9.7 | |
| Resolution | % | 0.025 | |
| Resistance tolerance | % | ± 5 | |
| Linearity | % | ± 0.25 | |

MOTOR GRAPHS 115 V



MOTOR GRAPHS 230 V

