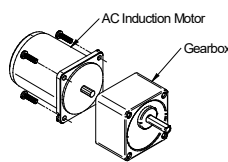
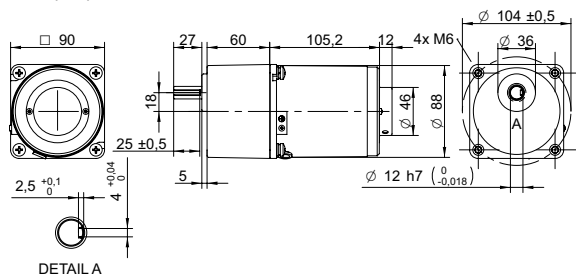


DRAWING (mm)

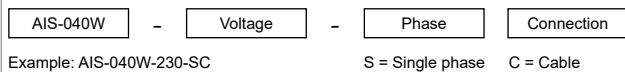


PHOTO

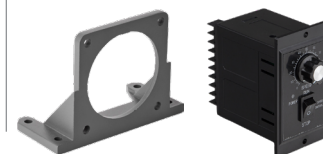


AC induction motor and gearbox also sold separately.

MODEL NO. DESIGNATION



ACCESSORIES¹



● C = customizations are offered on demand even for smaller quantities. Typical customizations are indicated with a green dot at column end. Please contact us for any customization request.

GEAR MOTOR DATA

	3	3.6	5	6	7.5	9	10	12.5	15	18	20	25	30	36	40	50	60	75	90	100	120	150	180	200	250	300	500	600	750	
Gear ratio	3	3.6	5	6	7.5	9	10	12.5	15	18	20	25	30	36	40	50	60	75	90	100	120	150	180	200	250	300	500	600	750	
Nominal torque	Nm	0.73	0.87	1.2	1.5	1.8	2.2	2.4	3.0	3.6	4.4	4.4	5.5	6.6	7.9	8.8	10 ²	10 ²	10 ²	10 ²	10 ²	10 ²	10 ²	10 ²	10 ²	10 ²	10 ²	10 ²	10 ²	
Nominal speed ³	rpm	400	330	240	200	160	130	120	96	80	67	60	48	40	33	30	24	20	16	13	12	10	8	7	6	5	4	2	2	2
Nominal power	W	31	31	31	31	31	31	31	31	31	28	28	28	28	28	25	21	17	14	13	10	8.4	7.0	6.3	5.0	4.2	2.5	2.1	1.7	
Gearb. nom. torq. ⁴	Nm	10	10	10	10	10	10	10	10	10	10	10	10	10	10	10	10	10	10	10	10	10	10	10	10	10	10	10	10	
Gearbox efficiency	%	81	81	81	81	81	81	81	81	81	73	73	73	73	73	73	66	66	66	66	66	66	66	66	59	59	59	59	59	
Radial load ⁵	N	350	350	350	350	350	350	350	350	350	450	450	450	450	450	450	450	450	450	450	450	450	450	450	450	450	450	450	450	
Direction of rot.		CW	CW	CW	CW	CW	CW	CW	CW	CW	CCW	CCW	CCW	CCW	CW	CW	CW	CW	CW	CW	CW	CW	CW	CW	CW	CCW	CCW	CCW	CCW	
Weight	kg	3.9	3.9	3.9	3.9	3.9	3.9	3.9	3.9	3.9	3.9	3.9	3.9	3.9	3.9	3.9	3.9	3.9	3.9	3.9	3.9	3.9	3.9	3.9	3.9	3.9	3.9	3.9	3.9	

OTHER GEAR MOTOR DATA

Service life	h	10000
Performance tolerances		± 15
Operating temperature	°C	-10 to 40
IP rating		IP20
Manufacturing standard		ISO 9001
CE label UL label		Yes No

AC INDUCTION MOTOR DATA

Nominal voltage	V	230
No. of phases		1
Frequency	Hz	50
No. of poles		4
Nominal speed	rpm	90 to 1200
Nominal torque	mNm	300
Nominal current	A	0.4
Nominal power	W	40
Stall torque	mNm	160
Insulation class		B
Motor cable		AWG18
Signal cable		AWG22
Motor and signal cable length	mm	300
Capacitor included in delivery	µF	2.5
Insulation resistance	MΩ	100
Dielectric strength	kV	1.5
Max. winding temperature	°C	80
Weight	kg	2.5

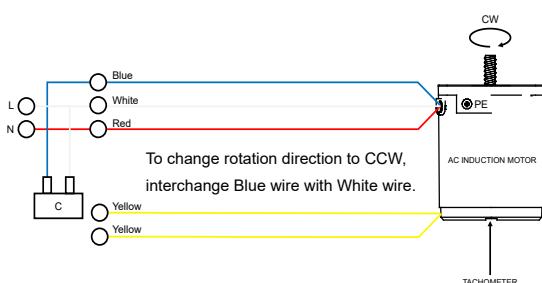
GEAR MOTOR RANGE AIS-SERIES⁶

Nominal voltage	V	See separate datasheet
Nominal power	W	See separate datasheet
Dimension	mm	See separate datasheet

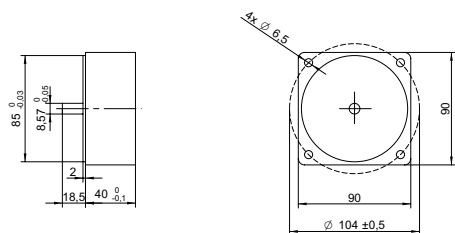
NOTES

1. See page 2 of this datasheet.
2. Gear motor torque limited by gearbox.
3. Gear motor nominal speed based on AC induction motor nominal speed of 1200 rpm.
4. Gearbox nominal torque.
5. 20 mm from shaft.
6. Visit www.transmotec.com to view datasheets.

WIRING DIAGRAM AC INDUCTION MOTOR



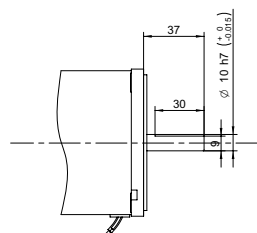
DECIMAL GEARBOX¹



DECIMAL GEARBOX DATA

Model designation	S90A-Y010	
Gear ratio	10:1	
Nominal torque	Nm	10
Description	Connected between AC motor and existing gearbox to decrease the speed further than the gear ratio listed in the table.	

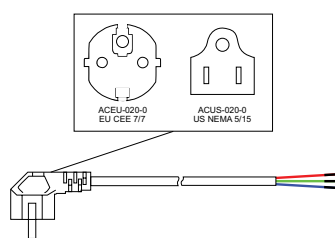
OUTPUT SHAFT D-CUT



DECIMAL GEARBOX DATA

Model designation Contact us for more information.

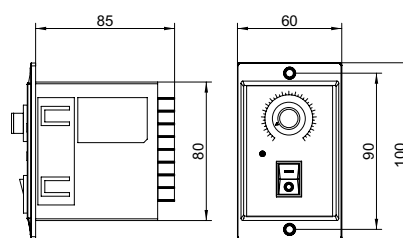
POWER CABLE



POWER CABLE DATA

Model designation	ACEU-020-0 ACUS-020-0	
Standard	EU CEE 7/7 US NEMA 5/15	
Cable length	m ft	2 8

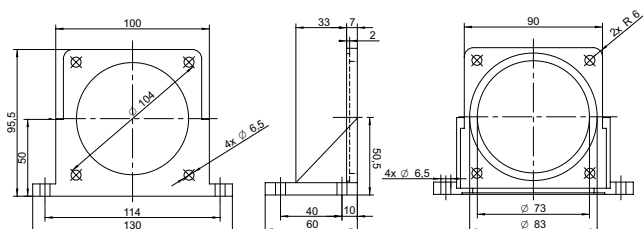
SPEED CONTROLLER



SPEED CONTROLLER DATA

Model designation	DA-110-040 DA-230-040	
Voltage	110 230	
Nominal power	W	40

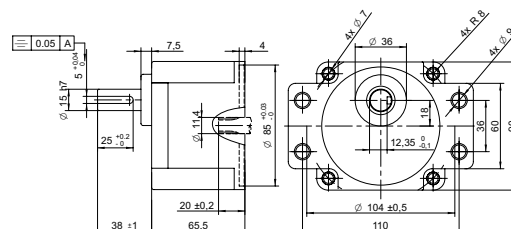
MOUNTING BRACKET



MOUNTING BRACKET DATA

Model designation	AMB-090	
Dimensions	mm	90x90

GEARBOX FLANGE MOUNTING



GEARBOX FLANGE MOUNTING DATA

Model designation Contact us for more information.

NOTES

1. Visit www.transmotec.com to view datasheets.