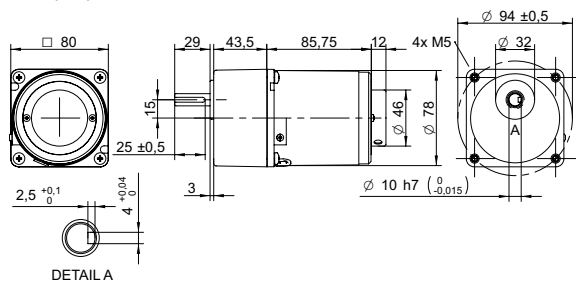
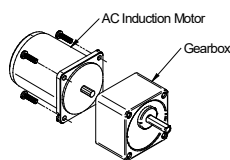


DRAWING (mm)

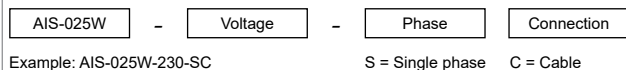


AC induction motor and gearbox also sold separately.

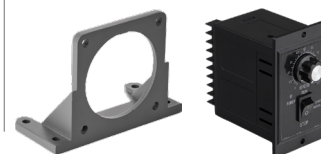
PHOTO



MODEL NO. DESIGNATION



ACCESSORIES¹



● C = customizations are offered on demand even for smaller quantities. Typical customizations are indicated with a green dot at column end. Please contact us for any customization request.

GEAR MOTOR DATA

Gear ratio	3	3.6	5	6	7.5	9	10	12.5	15	18	20	25	30	36	40	50	60	75	90	100	120	150	180	200	250	300	500	600	750	C
Nominal torque	Nm	0.46	0.55	0.77	0.92	1.2	1.4	1.5	1.9	2.3	2.8	2.8	3.5	4.2	5.0	5.5	6.9	7.5	8.0²	8.0²	8.0²	8.0²	8.0²	8.0²	8.0²	8.0²	8.0²	8.0²	8.0²	●
Nominal speed³	rpm	400	330	240	200	160	130	120	96	80	67	60	48	40	33	30	24	20	16	13	12	10	8	7	6	5	4	2	2	2
Nominal power	W	19	19	19	19	19	19	19	19	19	17	17	17	17	17	17	16	13	11	10	8.4	6.7	5.6	5.0	4.0	3.4	2.0	1.7	1.3	
Gearb. nom. torq.⁴	Nm	8	8	8	8	8	8	8	8	8	8	8	8	8	8	8	8	8	8	8	8	8	8	8	8	8	8	8	8	
Gearbox efficiency	%	81	81	81	81	81	81	81	81	81	73	73	73	73	73	73	66	66	66	66	66	66	66	66	59	59	59	59	59	
Radial load⁵	N	150	150	150	150	150	150	150	150	150	300	300	300	300	300	300	300	300	300	300	300	300	300	300	300	300	300	300	300	
Direction of rot.		CW	CW	CW	CW	CW	CW	CW	CW	CW	CW	CCW	CCW	CCW	CCW	CCW	CW	CW	CW	CW	CW	CW	CW	CW	CCW	CCW	CCW	CCW	CCW	
Weight	kg	2.5	2.5	2.5	2.5	2.5	2.5	2.5	2.5	2.5	2.5	2.5	2.5	2.5	2.5	2.5	2.5	2.5	2.5	2.5	2.5	2.5	2.5	2.5	2.5	2.5	2.5	2.5	2.5	

OTHER GEAR MOTOR DATA

Service life	h	10000	C
Performance tolerances		± 15	
Operating temperature	°C	-10 to 40	
IP rating		IP20	
Manufacturing standard		ISO 9001	
CE label UL label		Yes No	

AC INDUCTION MOTOR DATA

Nominal voltage	V	230	C
No. of phases		1	
Frequency	Hz	50	
No. of poles		4	
Nominal speed	rpm	90 to 1200	
Nominal torque	mNm	190	
Nominal current	A	0.23	
Nominal power	W	25	
Stall torque	mNm	88	
Insulation class		B	
Motor cable		AWG20	
Signal cable		AWG22	
Motor and signal cable length	mm	300	
Capacitor included in delivery	µF	1.8	
Insulation resistance	MΩ	100	
Dielectric strength	kV	1.5	
Max. winding temperature	°C	80	
Weight	kg	1.7	

GEAR MOTOR RANGE AIS-SERIES⁶

Nominal voltage	V	See separate datasheet
Nominal power	W	See separate datasheet
Dimension	mm	See separate datasheet

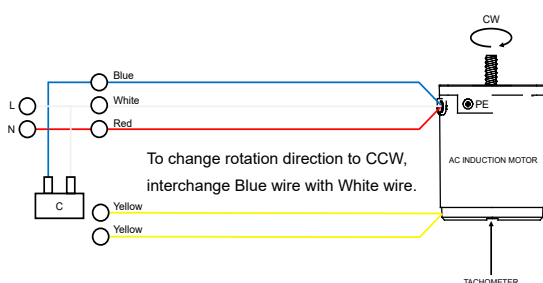
NOTES

1. See page 2 of this datasheet.
2. Gear motor torque limited by gearbox.
3. Gear motor nominal speed based on AC induction motor nominal speed of 1200 rpm.
4. Gearbox nominal torque.
5. 20 mm from shaft.
6. Visit www.transmotec.com to view datasheets.

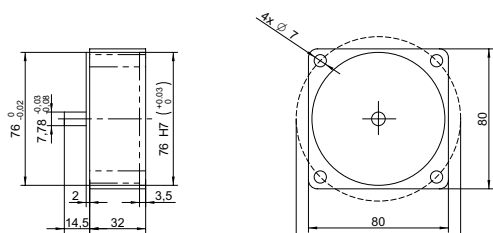
GEARBOX DATA

Shaft axial load	N	50	C
Bearing type		Ball bearing	
Shaft material		40 Cr steel	
Housing material		Aluminum	
Material gear stage		40 Cr steel	

WIRING DIAGRAM AC INDUCTION MOTOR



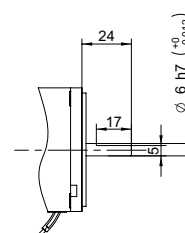
DECIMAL GEARBOX¹



DECIMAL GEARBOX DATA

Model designation	S80A-Y010	
Gear ratio	10:1	
Nominal torque	Nm	8
Description	Connected between AC motor and existing gearbox to decrease the speed further than the gear ratio listed in the table.	

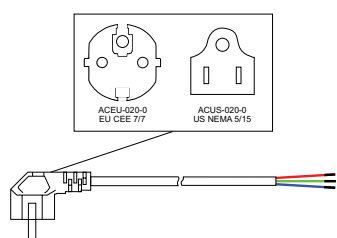
OUTPUT SHAFT D-CUT



DECIMAL GEARBOX DATA

Model designation	Contact us for more information.
-------------------	----------------------------------

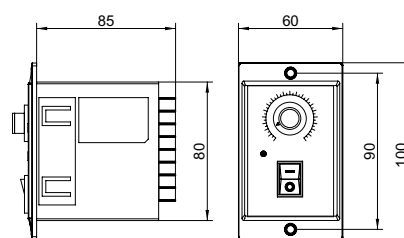
POWER CABLE



POWER CABLE DATA

Model designation	ACEU-020-0 ACUS-020-0	
Standard	EU CEE 7/7 US NEMA 5/15	
Cable length	m ft	2 8

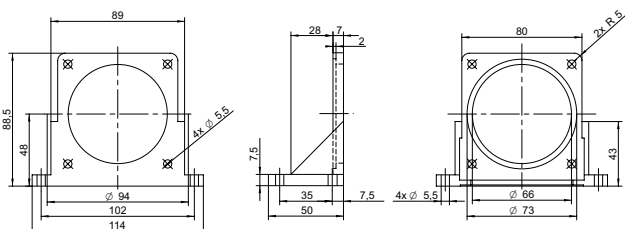
SPEED CONTROLLER



SPEED CONTROLLER DATA

Model designation	DA-110-025 DA-230-025	
Voltage	110 230	
Nominal power	W	25

MOUNTING BRACKET



MOUNTING BRACKET DATA

Model designation	AMB-080	
Dimensions	mm	80x80

NOTES

1. Visit www.transmotec.com to view datasheets.