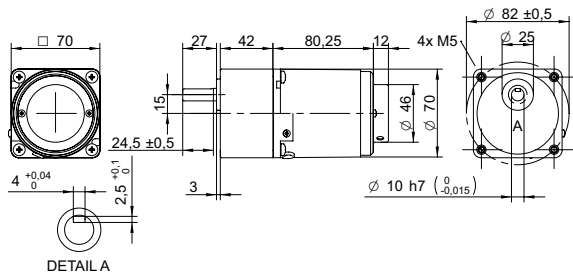
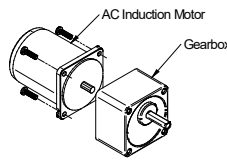


DRAWING (mm)



AC induction motor and gearbox also sold separately.

PHOTO



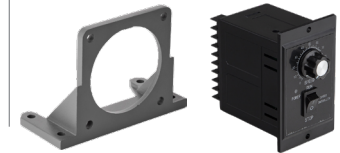
MODEL NO. DESIGNATION



Example: AIS-015W-230-SC

S = Single phase C = Cable

ACCESSORIES¹



C = customizations are offered on demand even for smaller quantities. Typical customizations are indicated with a green dot at column end. Please contact us for any customization request.

GEAR MOTOR DATA

Gear ratio	3	3.6	5	6	7.5	9	10	12.5	15	18	20	25	30	36	40	50	60	75	90	100	120	150	180	200	250	300	500	600	750	C
Nominal torque Nm	0.29	0.35	0.49	0.58	0.73	0.87	0.97	1.2	1.5	1.7	1.8	2.2	2.6	3.2	3.5	4.4	4.8	5.0 ²	5.0 ²	5.0 ²	5.0 ²	5.0 ²	5.0 ²	5.0 ²	5.0 ²	5.0 ²	5.0 ²	5.0 ²	5.0 ²	●
Nominal speed ³ rpm	400	330	240	200	160	130	120	96	80	67	60	48	40	33	30	24	20	16	13	12	10	8	7	6	5	4	2	2	2	
Nominal power W	12	12	12	12	12	12	12	12	12	12	11	11	11	11	11	11	10	8.4	7.0	6.3	5.2	4.2	3.5	3.1	2.5	2.1	1.3	1.0	0.84	
Gearb. nom. torq. ⁴ Nm	5	5	5	5	5	5	5	5	5	5	5	5	5	5	5	5	5	5	5	5	5	5	5	5	5	5	5	5	5	
Gearbox efficiency %	81	81	81	81	81	81	81	81	81	81	73	73	73	73	73	73	66	66	66	66	66	66	66	66	59	59	59	59	59	
Radial load ⁵ N	120	120	120	120	120	120	120	120	120	120	250	250	250	250	250	250	250	250	250	250	250	250	250	250	250	250	250	250	250	
Direction of rot.	CW	CW	CW	CW	CW	CW	CW	CW	CW	CCW	CCW	CCW	CCW	CCW	CCW	CCW	CW	CW	CW	CW	CW	CW	CW	CW	CW	CCW	CCW	CCW	CCW	CCW
Weight kg	1.7	1.7	1.7	1.7	1.7	1.7	1.7	1.7	1.7	1.7	1.7	1.7	1.7	1.7	1.7	1.7	1.7	1.7	1.7	1.7	1.7	1.7	1.7	1.7	1.7	1.7	1.7	1.7	1.7	

OTHER GEAR MOTOR DATA

Service life h	10000	C
Performance tolerances	± 15	
Operating temperature °C	-10 to 40	
IP rating	IP20	
Manufacturing standard	ISO 9001	
CE label UL label	Yes No	

AC INDUCTION MOTOR DATA

Nominal voltage V	230	C
No. of phases	1	
Frequency Hz	50	
No. of poles	4	
Nominal speed rpm	90 to 1200	
Nominal torque mNm	120	
Nominal current A	0.2	
Nominal power W	15	
Stall torque mNm	54	
Insulation class	B	
Motor cable	AWG20	
Signal cable	AWG22	
Motor and signal cable length mm	300	
Capacitor included in delivery μF	1.2	
Insulation resistance MΩ	100	
Dielectric strength kV	1.5	
Max. winding temperature °C	80	
Weight kg	1.2	

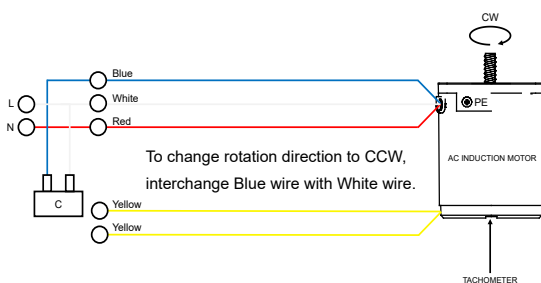
GEAR MOTOR RANGE AIS-SERIES⁶

Nominal voltage V	See separate datasheet
Nominal power W	See separate datasheet
Dimension mm	See separate datasheet

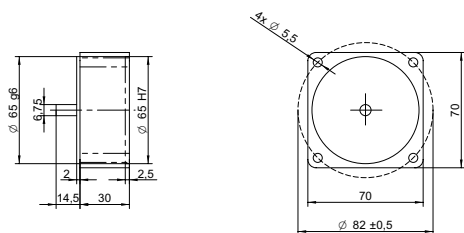
NOTES

1. See page 2 of this datasheet.
2. Gear motor torque limited by gearbox.
3. Gear motor nominal speed based on AC induction motor nominal speed of 1200 rpm.
4. Gearbox nominal torque.
5. 20 mm from shaft.
6. Visit www.transmotec.com to view datasheets.

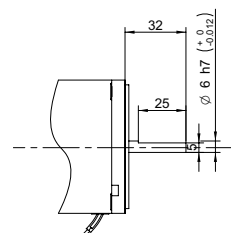
WIRING DIAGRAM AC INDUCTION MOTOR



DECIMAL GEARBOX¹



OUTPUT SHAFT D-CUT



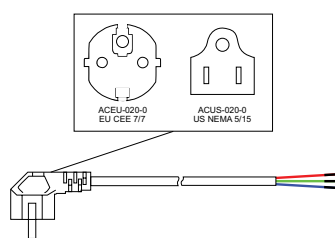
DECIMAL GEARBOX DATA

Model designation	S70A-Y010	
Gear ratio	10:1	
Nominal torque	Nm	5
Description	Connected between AC motor and existing gearbox to decrease the speed further than the gear ratio listed in the table.	

DECIMAL GEARBOX DATA

Model designation Contact us for more information.

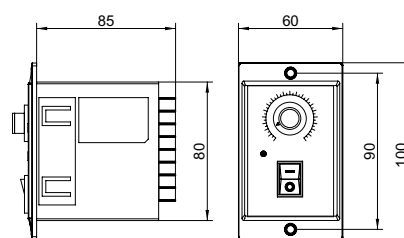
POWER CABLE



POWER CABLE DATA

Model designation	ACEU-020-0 ACUS-020-0	
Standard	EU CEE 7/7 US NEMA 5/15	
Cable length	m ft	2 8

SPEED CONTROLLER



SPEED CONTROLLER DATA

Model designation	DA-110-015 DA-230-015	
Voltage	110 230	
Nominal power	W	15

NOTES

1. Visit www.transmotec.com to view datasheets.