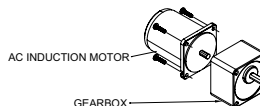
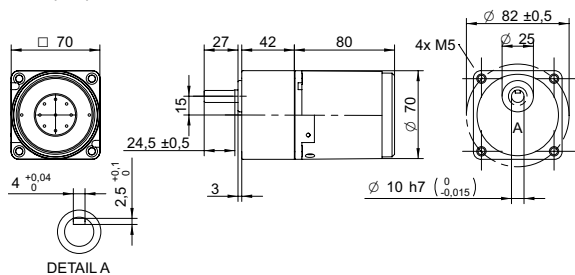


DRAWING (mm)

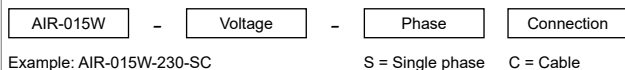


PHOTO



AC induction motor and gearbox also sold separately.

MODEL NO. DESIGNATION



ACCESSORIES<sup>1</sup>



C = customizations are offered on demand even for smaller quantities. Typical customizations are indicated with a green dot at column end. Please contact us for any customization request.

GEAR MOTOR DATA

|                                | 3       | 3.6  | 5    | 6    | 7.5  | 9    | 10  | 12.5 | 15  | 18  | 20  | 25  | 30  | 36  | 40  | 50  | 60               | 75               | 90               | 100              | 120              | 150              | 180              | 200              | 250              | 300              | 500              | 600              | 750              |
|--------------------------------|---------|------|------|------|------|------|-----|------|-----|-----|-----|-----|-----|-----|-----|-----|------------------|------------------|------------------|------------------|------------------|------------------|------------------|------------------|------------------|------------------|------------------|------------------|------------------|
| Gear ratio                     | 3       | 3.6  | 5    | 6    | 7.5  | 9    | 10  | 12.5 | 15  | 18  | 20  | 25  | 30  | 36  | 40  | 50  | 60               | 75               | 90               | 100              | 120              | 150              | 180              | 200              | 250              | 300              | 500              | 600              | 750              |
| Nominal torque                 | Nm 0.30 | 0.36 | 0.51 | 0.61 | 0.76 | 0.91 | 1.0 | 1.3  | 1.5 | 1.8 | 1.8 | 2.3 | 2.7 | 3.3 | 3.7 | 4.6 | 5.0 <sup>2</sup> | 5.0 <sup>2</sup> | 5.0 <sup>2</sup> | 5.0 <sup>2</sup> | 5.0 <sup>2</sup> | 5.0 <sup>2</sup> | 5.0 <sup>2</sup> | 5.0 <sup>2</sup> | 5.0 <sup>2</sup> | 5.0 <sup>2</sup> | 5.0 <sup>2</sup> | 5.0 <sup>2</sup> | 5.0 <sup>2</sup> |
| Nominal speed                  | rpm 400 | 330  | 240  | 200  | 160  | 130  | 120 | 96   | 80  | 67  | 60  | 48  | 40  | 33  | 30  | 24  | 20               | 16               | 13               | 12               | 10               | 8                | 7                | 6                | 5                | 4                | 2                | 2                | 2                |
| Nominal power                  | W 13    | 13   | 13   | 13   | 13   | 13   | 13  | 13   | 13  | 13  | 11  | 11  | 11  | 11  | 11  | 11  | 10               | 8.4              | 7.0              | 6.3              | 5.2              | 4.2              | 3.5              | 3.1              | 2.5              | 2.1              | 1.3              | 1.0              | 0.84             |
| Gearb. nom. torq. <sup>3</sup> | Nm 5    | 5    | 5    | 5    | 5    | 5    | 5   | 5    | 5   | 5   | 5   | 5   | 5   | 5   | 5   | 5   | 5                | 5                | 5                | 5                | 5                | 5                | 5                | 5                | 5                | 5                | 5                | 5                | 5                |
| Gearbox efficiency             | % 81    | 81   | 81   | 81   | 81   | 81   | 81  | 81   | 81  | 81  | 73  | 73  | 73  | 73  | 73  | 73  | 66               | 66               | 66               | 66               | 66               | 66               | 66               | 66               | 59               | 59               | 59               | 59               | 59               |
| Radial load <sup>4</sup>       | N 120   | 120  | 120  | 120  | 120  | 120  | 120 | 120  | 120 | 120 | 250 | 250 | 250 | 250 | 250 | 250 | 250              | 250              | 250              | 250              | 250              | 250              | 250              | 250              | 250              | 250              | 250              | 250              | 250              |
| Direction of rot.              | CW      | CW   | CW   | CW   | CW   | CW   | CW  | CW   | CW  | CCW | CCW | CCW | CCW | CCW | CCW | CCW | CW               | CW               | CW               | CW               | CW               | CW               | CW               | CW               | CW               | CCW              | CCW              | CCW              | CCW              |
| Weight                         | kg 1.7  | 1.7  | 1.7  | 1.7  | 1.7  | 1.7  | 1.7 | 1.7  | 1.7 | 1.7 | 1.7 | 1.7 | 1.7 | 1.7 | 1.7 | 1.7 | 1.7              | 1.7              | 1.7              | 1.7              | 1.7              | 1.7              | 1.7              | 1.7              | 1.7              | 1.7              | 1.7              | 1.7              | 1.7              |

OTHER GEAR MOTOR DATA

|                        |    |           |
|------------------------|----|-----------|
| Service life           | h  | 10000     |
| Performance tolerances |    | ± 15      |
| Operating temperature  | °C | -10 to 40 |
| IP rating              |    | IP20      |
| Manufacturing standard |    | ISO 9001  |
| CE label   UL label    |    | Yes   No  |

AC INDUCTION MOTOR DATA

|                                |     |       |
|--------------------------------|-----|-------|
| Nominal voltage                | V   | 230   |
| No. of phases                  |     | 1     |
| Frequency                      | Hz  | 50    |
| No. of poles                   |     | 4     |
| Nominal speed                  | rpm | 1200  |
| Nominal torque                 | mNm | 130   |
| Nominal current                | A   | 0.23  |
| Nominal power                  | W   | 15    |
| Stall torque                   | mNm | 110   |
| Insulation class               |     | B     |
| Motor cable                    |     | AWG20 |
| Motor cable length             | mm  | 300   |
| Capacitor included in delivery | µF  | 1.5   |
| Insulation resistance          | MΩ  | 100   |
| Dielectric strength            | kV  | 1.5   |
| Max. winding temperature       | °C  | 80    |
| Weight                         | kg  | 1.2   |

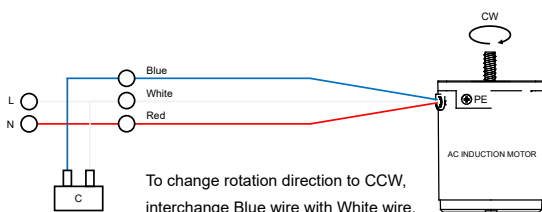
GEAR MOTOR RANGE AIR-SERIES<sup>5</sup>

|                 |    |                        |
|-----------------|----|------------------------|
| Nominal voltage | V  | See separate datasheet |
| Nominal power   | W  | See separate datasheet |
| Dimension       | mm | See separate datasheet |

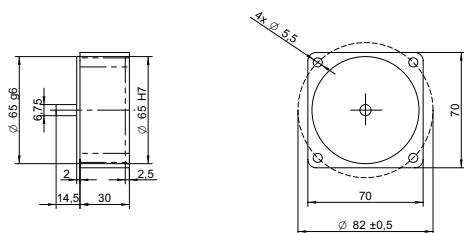
NOTES

1. See page 2 of this datasheet.
2. Gear motor torque limited by gearbox.
3. Gearbox nominal torque.
4. 20 mm from shaft.
5. Visit [www.transmotec.com](http://www.transmotec.com) to view datasheets.

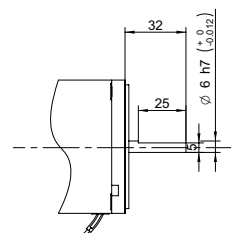
WIRING DIAGRAM AC INDUCTION MOTOR



## DECIMAL GEARBOX<sup>1</sup>



## OUTPUT SHAFT D-CUT



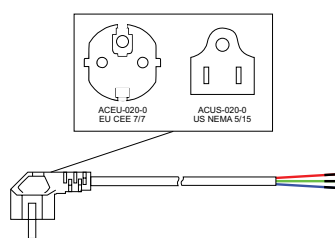
## DECIMAL GEARBOX DATA

|                   |  |
|-------------------|--|
| Model designation | S70A-Y010  |
| Gear ratio        | 10:1   |
| Nominal torque    | Nm 5   |
| Description       | Connected between AC motor and existing gearbox to decrease the speed further than the gear ratio listed in the table. |

## DECIMAL GEARBOX DATA

Model designation Contact us for more information.

## POWER CABLE



## POWER CABLE DATA

|                   |                           |
|-------------------|---------------------------|
| Model designation | ACEU-020-0   ACUS-020-0   |
| Standard          | EU CEE 7/7   US NEMA 5/15 |
| Cable length      | m   ft 2   8              |

## NOTES

1. Visit [www.transmotec.com](http://www.transmotec.com) to view datasheets.