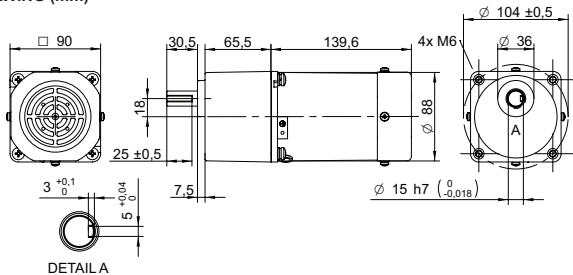
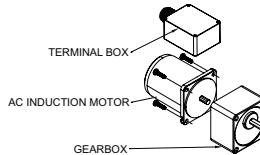


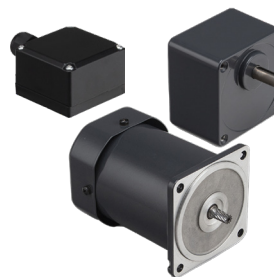
DRAWING (mm)



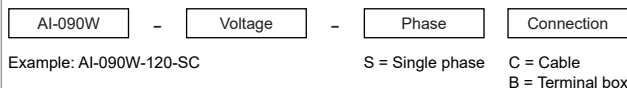
AC induction motor and gearbox also sold separately.



PHOTO



MODEL NO. DESIGNATION



ACCESSORIES¹



C = customizations are offered on demand even for smaller quantities. Typical customizations are indicated with a green dot at column end. Please contact us for any customization request.

| GEAR MOTOR DATA | | | | | | | | | | | | | | | | | | | | | | C | | | | | |
|--------------------------------|-----|-----|-----|-----|-----|-----|-----|-----|------|-----|-----|-----|-----|-----|-----|-----|-----------------|-----------------|-----------------|-----------------|-----------------|-----------------|-----------------|-----------------|-----------------|-----------------|---|
| Gear ratio | | 3 | 3.6 | 5 | 6 | 7.5 | 9 | 10 | 12.5 | 15 | 18 | 20 | 25 | 30 | 36 | 40 | 50 | 60 | 75 | 90 | 100 | 120 | 150 | 180 | 200 | | |
| Nominal torque | Nm | 1.4 | 1.7 | 2.3 | 2.8 | 3.5 | 4.2 | 4.6 | 5.8 | 6.9 | 8.3 | 8.3 | 10 | 12 | 15 | 17 | 20 ² | 20 ² | 20 ² | 20 ² | 20 ² | 20 ² | 20 ² | 20 ² | 20 ² | 20 ² | ● |
| Nominal speed | rpm | 520 | 430 | 310 | 260 | 210 | 170 | 160 | 120 | 100 | 86 | 78 | 62 | 52 | 43 | 39 | 31 | 26 | 21 | 17 | 16 | 13 | 10 | 8,6 | 7,8 | | |
| Nominal power | W | 75 | 75 | 75 | 75 | 75 | 75 | 75 | 75 | 75 | 75 | 68 | 68 | 68 | 68 | 68 | 65 | 54 | 43 | 36 | 32 | 27 | 22 | 18 | 16 | | |
| Gearb. nom. torq. ³ | Nm | 20 | 20 | 20 | 20 | 20 | 20 | 20 | 20 | 20 | 20 | 20 | 20 | 20 | 20 | 20 | 20 | 20 | 20 | 20 | 20 | 20 | 20 | 20 | 20 | | |
| Gearbox efficiency | % | 81 | 81 | 81 | 81 | 81 | 81 | 81 | 81 | 81 | 81 | 73 | 73 | 73 | 73 | 73 | 73 | 66 | 66 | 66 | 66 | 66 | 66 | 66 | 66 | | |
| Radial load ⁴ | N | 500 | 500 | 500 | 500 | 500 | 500 | 600 | 600 | 600 | 600 | 700 | 700 | 700 | 700 | 700 | 700 | 700 | 700 | 700 | 700 | 700 | 700 | 700 | 700 | | |
| Direction of rot. | | CW | CW | CW | CW | CW | CW | CCW | CCW | CCW | CCW | CW | CW | CW | CW | CW | CW | CW | CW | CCW | CCW | CCW | CCW | CCW | CCW | | |
| Weight | kg | 4.7 | 4.7 | 4.7 | 4.7 | 4.7 | 4.7 | 4.7 | 4.7 | 4.7 | 4.7 | 4.7 | 4.7 | 4.7 | 4.7 | 4.7 | 4.7 | 4.7 | 4.7 | 4.7 | 4.7 | 4.7 | 4.7 | 4.7 | 4.7 | | |

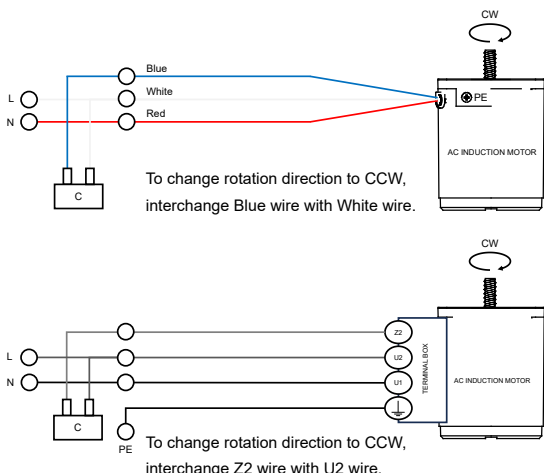
| OTHER GEAR MOTOR DATA | | C |
|------------------------|----|-------------|
| Service life | h | 10000 |
| Performance tolerances | | ± 15 |
| Operating temperature | °C | -10 to 40 |
| IP rating ⁵ | | IP20 IP54 |
| Manufacturing standard | | ISO 9001 |
| CE label UL label | | No No |

| AC INDUCTION MOTOR DATA | | C |
|--------------------------------|-----|-------|
| Nominal voltage | V | 120 |
| No. of phases | | 1 |
| Frequency | Hz | 60 |
| No. of poles | | 4 |
| Nominal speed | rpm | 1550 |
| Nominal torque | mNm | 570 |
| Nominal current | A | 1.5 |
| Nominal power | W | 90 |
| Stall torque | mNm | 500 |
| Insulation class | | B |
| Motor cable | | AWG18 |
| Motor cable length | mm | 300 |
| Capacitor included in delivery | µF | 20 |
| Insulation resistance | MΩ | 100 |
| Dielectric strength | kV | 1.5 |
| Max. winding temperature | °C | 80 |
| Weight | kg | 3.2 |

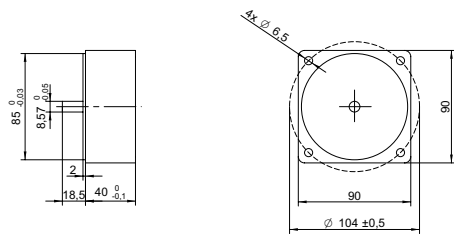
| GEAR MOTOR RANGE AI-SERIES ⁷ | |
|---|---------------------------|
| Nominal voltage | V See separate datasheet |
| Nominal power | W See separate datasheet |
| Dimension | mm See separate datasheet |

- NOTES**
- See page 2 of this catalog.
 - Gear motor torque limited by gearbox.
 - Gearbox nominal torque.
 - 20 mm from shaft.
 - IP20 without terminal box, IP54 with terminal box.
 - Cables/wires for connecting terminal box not included with AC induction motor.
 - Visit www.transmotec.com to view datasheets.

WIRING DIAGRAM AC INDUCTION MOTOR⁶



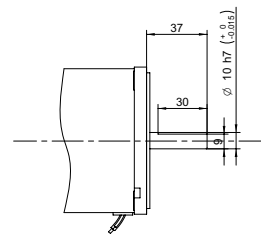
DECIMAL GEARBOX¹



DECIMAL GEARBOX DATA

| | | |
|-------------------|--|----|
| Model designation | S90A-Y010 | |
| Gear ratio | 10:1 | |
| Nominal torque | Nm | 10 |
| Description | Connected between AC motor and existing gearbox to decrease the speed further than the gear ratio listed in the table. | |

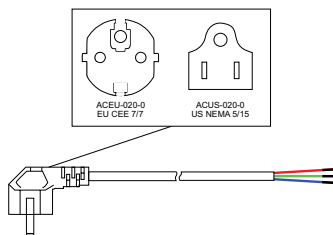
OUTPUT SHAFT D-CUT



DECIMAL GEARBOX DATA

Model designation Contact us for more information.

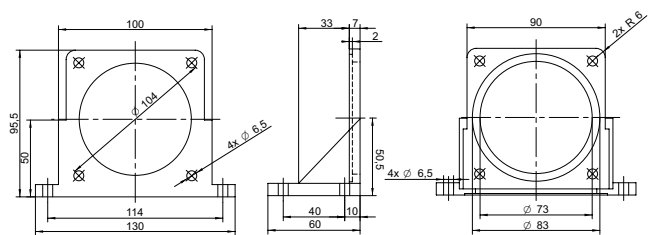
POWER CABLE



POWER CABLE DATA

| | | |
|-------------------|---------------------------|-------|
| Model designation | ACEU-020-0 ACUS-020-0 | |
| Standard | EU CEE 7/7 US NEMA 5/15 | |
| Cable length | m ft | 2 8 |

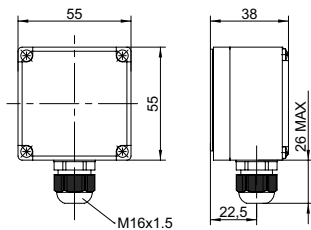
MOUNTING BRACKET



MOUNTING BRACKET DATA

| | | |
|-------------------|---------|-------|
| Model designation | AMB-090 | |
| Dimensions | mm | 90x90 |

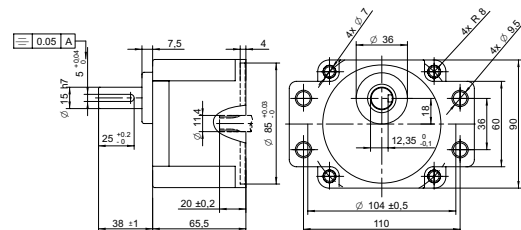
TERMINAL BOX



TERMINAL BOX DATA

Model designation See model no. designation to order correct part number.

GEARBOX FLANGE MOUNTING



GEARBOX FLANGE MOUNTING DATA

Model designation Contact us for more information.

NOTES

1. Visit www.transmotec.com to view datasheets.