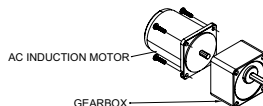
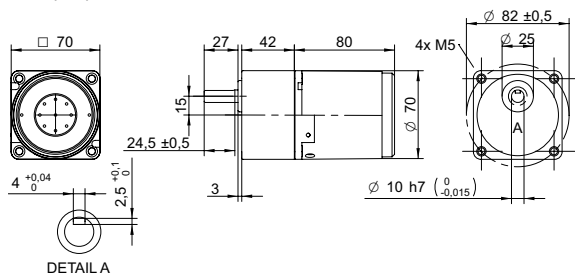


DRAWING (mm)

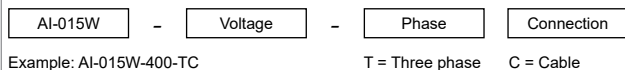


PHOTO



AC induction motor and gearbox also sold separately.

MODEL NO. DESIGNATION



ACCESSORIES¹



C = customizations are offered on demand even for smaller quantities. Typical customizations are indicated with a green dot at column end. Please contact us for any customization request.

GEAR MOTOR DATA C

Gear ratio		3	3.6	5	6	7.5	9	10	12.5	15	18	20	25	30	36	40	50	60	75	90	100	120	150	180	200	250	300	500	600	750	●
Nominal torque	Nm	0.30	0.36	0.51	0.61	0.76	0.91	1.0	1.3	1.5	1.8	1.8	2.3	2.7	3.3	3.7	4.6	5.0 ²	5.0 ²	5.0 ²	5.0 ²	5.0 ²	5.0 ²	5.0 ²	5.0 ²	5.0 ²	5.0 ²	5.0 ²	5.0 ²	5.0 ²	
Nominal speed	rpm	400	330	240	200	160	130	120	96	80	67	60	48	40	33	30	24	20	16	13	12	10	8	7	6	5	4	2	2	2	
Nominal power	W	13	13	13	13	13	13	13	13	13	13	11	11	11	11	11	11	10	8	7	6	5	4	3	3	2.5	2.1	1.3	1.0	0.84	
Gearb. nom. torq. ³	Nm	5	5	5	5	5	5	5	5	5	5	5	5	5	5	5	5	5	5	5	5	5	5	5	5	5	5	5	5		
Gearbox efficiency	%	81	81	81	81	81	81	81	81	81	81	73	73	73	73	73	73	66	66	66	66	66	66	66	66	59	59	59	59	59	
Radial load ⁴	N	120	120	120	120	120	120	120	120	120	250	250	250	250	250	250	250	250	250	250	250	250	250	250	250	250	250	250	250	250	
Direction of rot.		CW	CW	CW	CW	CW	CW	CW	CW	CW	CCW	CCW	CCW	CCW	CCW	CCW	CCW	CW	CW	CW	CW	CW	CW	CW	CW	CW	CCW	CCW	CCW	CCW	
Weight	kg	1.6	1.6	1.6	1.6	1.6	1.6	1.6	1.6	1.6	1.6	1.6	1.6	1.6	1.6	1.6	1.6	1.6	1.6	1.6	1.6	1.6	1.6	1.6	1.6	1.6	1.6	1.6	1.6	1.6	

OTHER GEAR MOTOR DATA C

Service life	h	10000
Performance tolerances		± 15
Operating temperature	°C	-10 to 40
IP rating		IP20
Manufacturing standard		ISO 9001
CE label UL label		Yes No

AC INDUCTION MOTOR DATA C

Nominal voltage	V	380
No. of phases		3
Frequency	Hz	50
No. of poles		4
Nominal speed	rpm	1200
Nominal torque	mNm	130
Nominal current	A	0.08
Nominal power	W	15
Stall torque	mNm	220
Insulation class		B
Motor cable		AWG20
Motor cable length	mm	300
Capacitor included in delivery	µF	-
Insulation resistance	MΩ	100
Dielectric strength	kV	1.5
Max. winding temperature	°C	80
Weight	kg	1

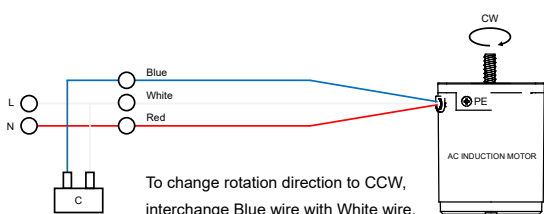
GEAR MOTOR RANGE AI-SERIES⁵

Nominal voltage	V	See separate datasheet
Nominal power	W	See separate datasheet
Dimension	mm	See separate datasheet

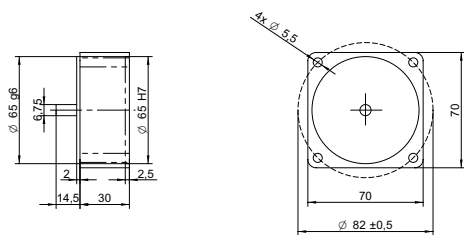
NOTES

1. See page 2 of this datasheet.
2. Gear motor torque limited by gearbox.
3. Gearbox nominal torque.
4. 20 mm from shaft.
5. Visit www.transmotec.com to view datasheets.

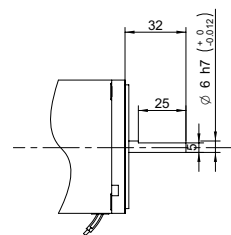
WIRING DIAGRAM AC INDUCTION MOTOR



DECIMAL GEARBOX¹



OUTPUT SHAFT D-CUT



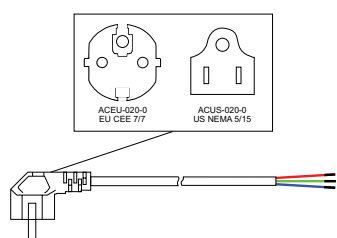
DECIMAL GEARBOX DATA

Model designation	S70A-Y010
Gear ratio	10:1
Nominal torque	Nm 5
Description	Connected between AC motor and existing gearbox to decrease the speed further than the gear ratio listed in the table.

DECIMAL GEARBOX DATA

Model designation Contact us for more information.

POWER CABLE



POWER CABLE DATA

Model designation	ACEU-020-0 ACUS-020-0
Standard	EU CEE 7/7 US NEMA 5/15
Cable length	m ft 2 8

NOTES

1. Visit www.transmotec.com to view datasheets.