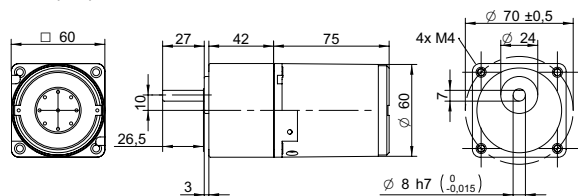
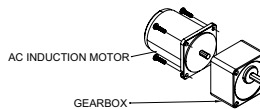


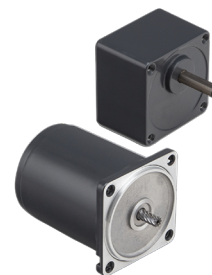
DRAWING (mm)



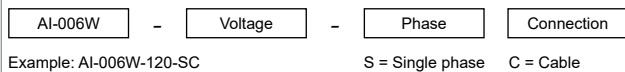
AC induction motor and gearbox also sold separately.



PHOTO



MODEL NO. DESIGNATION



ACCESSORIES<sup>1</sup>



C = customizations are offered on demand even for smaller quantities. Typical customizations are indicated with a green dot at column end. Please contact us for any customization request.

GEAR MOTOR DATA C

Gear ratio		3	3.6	5	6	7.5	9	10	12.5	15	18	20	25	30	36	40	50	60	75	90	100	120	150	180	200	●
Nominal torque	Nm	0.10	0.12	0.16	0.19	0.24	0.29	0.32	0.41	0.49	0.58	0.58	0.73	0.88	1.1	1.2	1.5	1.6	2.0	2.4	2.6	3.0 <sup>2</sup>	3.0 <sup>2</sup>	3.0 <sup>2</sup>	3.0 <sup>2</sup>	
Nominal speed	rpm	480	400	290	240	190	160	150	120	97	81	73	58	48	40	36	29	24	19	16	15	12	10	8	7	
Nominal power	W	4.9	4.9	4.9	4.9	4.9	4.9	4.9	4.9	4.9	4.9	4.4	4.4	4.4	4.4	4.4	4.4	4.0	4.0	4.0	4.0	3.8	3.0	2.5	2.3	
Gearb. nom. torq. <sup>3</sup>	Nm	3	3	3	3	3	3	3	3	3	3	3	3	3	3	3	3	3	3	3	3	3	3	3	3	
Gearbox efficiency	%	81	81	81	81	81	81	81	81	81	81	73	73	73	73	73	73	66	66	66	66	66	66	66	66	
Radial load <sup>4</sup>	N	80	80	80	80	80	80	80	80	80	80	180	180	180	180	180	180	180	180	180	180	180	180	180	180	
Direction of rot.		CW	CW	CW	CW	CW	CW	CW	CW	CW	CW	CCW	CCW	CCW	CCW	CCW	CCW	CW	CW	CW	CW	CW	CW	CW	CW	
Weight	kg	1.2	1.2	1.2	1.2	1.2	1.2	1.2	1.2	1.2	1.2	1.2	1.2	1.2	1.2	1.2	1.2	1.2	1.2	1.2	1.2	1.2	1.2	1.2	1.2	

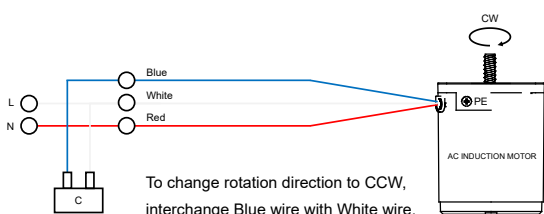
OTHER GEAR MOTOR DATA C      AC INDUCTION MOTOR DATA C      GEAR MOTOR RANGE AI-SERIES<sup>5</sup>

Service life	h	10000
Performance tolerances		± 15
Operating temperature	°C	-10 to 40
IP rating		IP20
Manufacturing standard		ISO 9001
CE label   UL label		No   No

GEARBOX DATA C

Shaft axial load	N	30
Bearing type		Ball bearing
Shaft material		40 Cr steel
Housing material		Aluminum
Material gear stage		40 Cr steel

WIRING DIAGRAM AC INDUCTION MOTOR

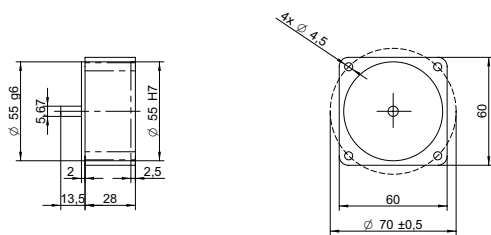


Nominal voltage	V	120
No. of phases		1
Frequency	Hz	60
No. of poles		4
Nominal speed	rpm	1500
Nominal torque	mNm	40
Nominal current	A	0.18
Nominal power	W	6
Stall torque	mNm	40
Insulation class		B
Motor cable		AWG20
Motor cable length	mm	300
Capacitor included in delivery	µF	2
Insulation resistance	MΩ	100
Dielectric strength	kV	1.5
Max. winding temperature	°C	80
Weight	kg	0.75

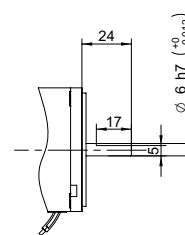
NOTES

1. See page 2 of this datasheet.
2. Gear motor torque limited by gearbox.
3. Gearbox nominal torque.
4. 20 mm from shaft.
5. Visit [www.transmotec.com](http://www.transmotec.com) to view datasheets.

## DECIMAL GEARBOX<sup>1</sup>



## OUTPUT SHAFT D-CUT



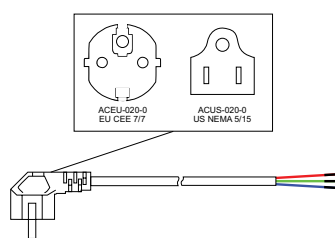
### DECIMAL GEARBOX DATA

Model designation	S60A-Y010	
Gear ratio	10:1	
Nominal torque	Nm	3
Description	Connected between AC motor and existing gearbox to decrease the speed further than the gear ratio listed in the table.	

### DECIMAL GEARBOX DATA

Model designation	Contact us for more information.
-------------------	----------------------------------

## POWER CABLE



### POWER CABLE DATA

Model designation	ACEU-020-0   ACUS-020-0	
Standard	EU CEE 7/7   US NEMA 5/15	
Cable length	m   ft	2   8

## NOTES

1. Visit [www.transmotec.com](http://www.transmotec.com) to view datasheets.