

DC WORM GEAR MOTORS

Ø 24.4 - 42.4 mm
0.1 - 3.9 Nm

We offer a broad range of high quality DC worm gear motors in standard and customized configurations. Our customer-centric approach makes us the ideal supplier for your project, especially to instrument and apparatus builders. In addition, we offer immediate delivery, thanks to always having a high number of motors in stock.

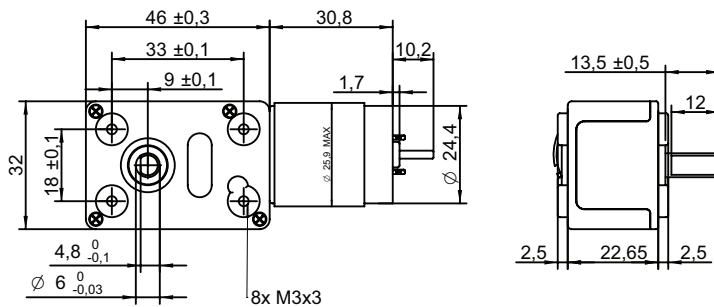
Customizations include:

- ✓ Customized harness
- ✓ Winding configuration
- ✓ Shaft configuration
- ✓ And more...

TABLE OF CONTENTS

MODEL	DIAMETER mm	LENGTH mm	VOLTAGE V	SPEED rpm	TORQUE Nm	PAGE
WRD3231	24.4	77	12 24	4.6 - 56	0.1 - 0.6	1
WRD4057	36	117	12 24	4.9 - 104	0.2 - 2	2
WRD5065	40	143	12 24	3.7 - 76	0.3 - 3.9	3
WRD5066	42.4	146	12 24	3.7 - 78	0.5 - 3.9	4

DRAWING (mm)



PHOTO

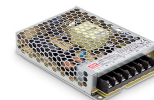


MODEL NO. DESIGNATION

WRD3231 - VOLTAGE - REDUCTION RATIO

Example: WRD3231-12-75

OPTIONS POWER SUPPLIES



● C = Customizations are offered on demand even for smaller quantities. Typical customizations indicated with green dot at column end. Please contact us for any customization request.

DC MOTOR DATA

Voltage V	No load current A	Rated current A	No load speed RPM	Nominal speed RPM	Nominal torque mNm	Output power W	Service life hrs
12	0.06	0.24	4900	4160	5.4	2.37	300
24	0.03	0.14	4900	4160	5.4	2.37	300

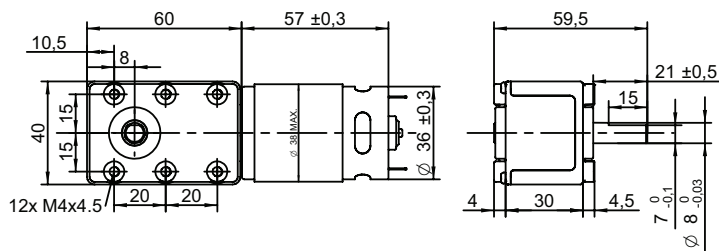
GEARHEAD DATA 12V

		75:1	100:1	200:1	300:1	500:1	700:1	900:1	1012:1
Reduction ratio									
Nominal torque	Nm	0.1	0.2	0.4	0.5	0.6	0.6	0.6	0.6
Nominal speed	RPM	56	42	21	14	8.8	6.5	5.1	4.6
Mechanical power	W	0.8	0.82	0.8	0.79	0.54	0.4	0.32	0.28
Weight	g	177	177	177	177	180	180	180	180
Rotation direction		CW	CW	CW	CW	CCW	CCW	CCW	CCW

GEARHEAD DATA 24V

		75:1	100:1	200:1	300:1	500:1	700:1	900:1	1012:1
Reduction ratio									
Nominal torque	Nm	0.1	0.2	0.4	0.5	0.6	0.6	0.6	0.6
Nominal speed	RPM	56	42	21	14	8.8	6.5	5.1	4.6
Mechanical power	W	0.8	0.82	0.8	0.79	0.54	0.4	0.32	0.28
Weight	g	177	177	177	177	180	180	180	180
Rotation direction		CW	CW	CW	CW	CCW	CCW	CCW	CCW

DRAWING (mm)



PHOTO

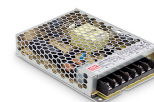


MODEL NO. DESIGNATION

WRD4057 - VOLTAGE - REDUCTION RATIO

Example: WRD4057-12-75

OPTIONS POWER SUPPLIES



● C = Customizations are offered on demand even for smaller quantities. Typical customizations indicated with green dot at column end. Please contact us for any customization request.

DC MOTOR DATA

Voltage V	No load current A	Rated current A	No load speed RPM	Nominal speed RPM	Nominal torque mNm	Output power W	Service life hrs
12	0.3	1.6	6000	5200	20	11	300
24	0.16	1.2	6000	5200	28	15	300

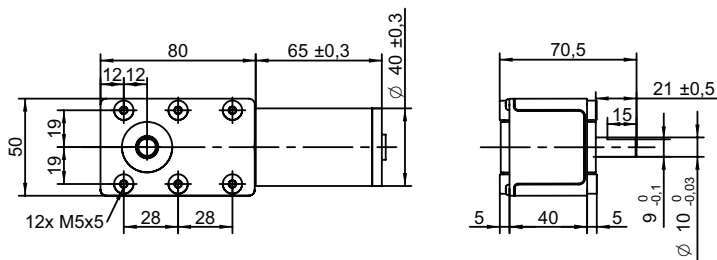
GEAR MOTOR DATA 12V

Reduction ratio	50:1	75:1	100:1	150:1	200:1	350:1	600:1	700:1	1050:1
Nominal torque Nm	0.2	0.3	0.4	0.6	0.8	1.0	2.0	2.0	2.0
Nominal speed RPM	104	69	52	35	26	15	8.6	7.4	4.9
Mechanical power W	2.1	2.1	2.1	2.1	2.1	1.5	1.8	1.5	1
Weight g	435	435	435	435	435	435	440	440	440
Rotation direction	CW	CW	CW	CW	CW	CW	CCW	CCW	CCW

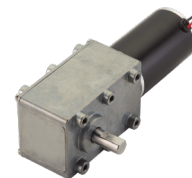
GEAR MOTOR DATA 24V

Reduction ratio	50:1	75:1	100:1	150:1	200:1	350:1	600:1	700:1	1050:1
Nominal torque Nm	0.3	0.4	0.6	0.8	1.0	1.0	2.0	2.0	2.0
Nominal speed RPM	103	68	51	34	26	15	8.5	7.3	4.9
Mechanical power W	3	2.9	3	3	2.6	1.5	1.8	1.5	1
Weight g	435	435	435	435	435	435	440	440	440
Rotation direction	CW	CW	CW	CW	CW	CW	CCW	CCW	CCW

DRAWING (mm)



PHOTO

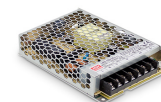


MODEL NO. DESIGNATION

WRD5065 - VOLTAGE - REDUCTION RATIO

Example: WRD5065-12-50

OPTIONS POWER SUPPLIES



● C = Customizations are offered on demand even for smaller quantities. Typical customizations indicated with green dot at column end. Please contact us for any customization request.

DC MOTOR DATA

Voltage V	No load current A	Rated current A	No load speed RPM	Nominal speed RPM	Nominal torque mNm	Output power W	Service life hrs
12	0.5	2	4500	3750	42	17	300
24	0.22	0.82	4500	3800	34	14	300

DC MOTOR CABLE DATA

UL	AWG	Length mm	Color positive terminal +	Color negative terminal -
1430	20	150 ± 10	Red	Black

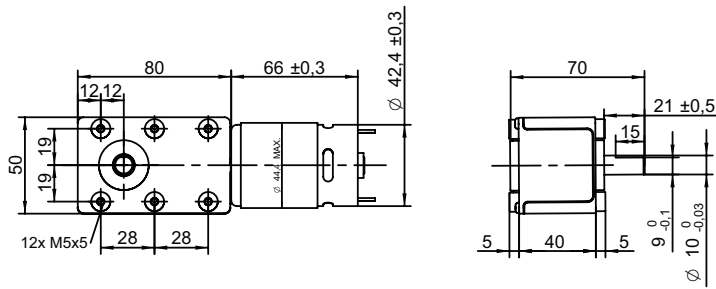
GEAR MOTOR DATA 12V

Reduction ratio		50:1	75:1	100:1	120:1	200:1	350:1	600:1	700:1	1050:1
Nominal torque	Nm	0.4	0.6	0.8	1.0	1.7	2.9	3.9	3.9	3.9
Nominal speed	RPM	75	50	38	31	19	11	6.3	5.4	3.6
Mechanical power	W	3.3	3.3	3.3	3.3	3.3	3.3	2.6	2.2	1.5
Weight	g	760	760	760	760	760	760	790	790	790
Rotation direction		CW	CW	CW	CW	CW	CW	CCW	CCW	CCW

GEAR MOTOR DATA 24V

Reduction ratio		50:1	75:1	100:1	120:1	200:1	350:1	600:1	700:1	1050:1
Nominal torque	Nm	0.3	0.5	0.7	0.8	1.4	2.4	3.9	3.9	3.9
Nominal speed	RPM	76	51	38	32	19	11	6.3	5.4	3.6
Mechanical power	W	2.7	2.7	2.7	2.7	2.7	2.7	2.6	2.2	1.5
Weight	g	760	760	760	760	760	760	790	790	790
Rotation direction		CW	CW	CW	CW	CW	CW	CCW	CCW	CCW

DRAWING (mm)



PHOTO



MODEL NO. DESIGNATION

WRD5066 - VOLTAGE - REDUCTION RATIO

Example: WRD5066-12-50

OPTIONS POWER SUPPLIES



● C = Customizations are offered on demand even for smaller quantities. Typical customizations indicated with green dot at column end. Please contact us for any customization request.

DC MOTOR DATA

Voltage V	No load current A	Rated current A	No load speed RPM	Nominal speed RPM	Nominal torque mNm	Output power W	Service life hrs
12	0.65	2.8	4600	3850	60	24	300
24	0.3	1.3	4600	3890	55	22	300

GEAR MOTOR DATA 12V

		50:1	75:1	100:1	120:1	200:1	350:1	600:1	700:1	1050:1
Reduction ratio		50:1	75:1	100:1	120:1	200:1	350:1	600:1	700:1	1050:1
Nominal torque	Nm	0.6	0.9	1.2	1.4	2.4	2.9	3.9	3.9	3.9
Nominal speed	RPM	77	51	39	32	19	11	6.4	5.5	3.7
Mechanical power	W	4.8	4.8	4.8	4.8	4.8	3.4	2.6	2.3	1.5
Weight	g	810	810	810	810	810	810	840	840	840
Rotation direction		CW	CW	CW	CW	CW	CW	CCW	CCW	CCW

GEAR MOTOR DATA 24V

		50:1	75:1	100:1	120:1	200:1	350:1	600:1	700:1	1050:1
Reduction ratio		50:1	75:1	100:1	120:1	200:1	350:1	600:1	700:1	1050:1
Nominal torque	Nm	0.5	0.8	1.1	1.3	2.2	2.9	3.9	3.9	3.9
Nominal speed	RPM	78	52	39	32	20	11	6.5	5.6	3.7
Mechanical power	W	4.5	4.5	4.5	4.5	4.5	3.4	2.7	2.3	1.5
Weight	g	810	810	810	810	810	810	840	840	840
Rotation direction		CW	CW	CW	CW	CW	CW	CCW	CCW	CCW