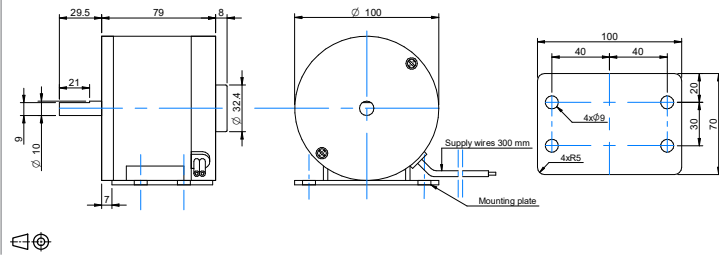


# D10079 / Ø 80mm / 141W

## DRAWING (mm)



## PHOTO



## ADDITIONAL

## MODEL NO. DESIGNATIONS

MODEL - VOLTAGE

Example: D10079-12

## MOTOR DATA

Nominal voltage (V)	12	24
No load speed (rpm)	3100	3200
No load current (A)	4.10	2.20
Nominal speed (rpm) *	2600	2750
Nominal torque (mNm) *	490	490
Nominal current (A)	15.5	7.4
Stall torque (mNm)	5154	5244
Starting current (A)	164	80
Output (W)	134	141
Length (mm)	79	79

(\*) Nominal speed and nominal torque have a tolerance of  $\pm 15\%$